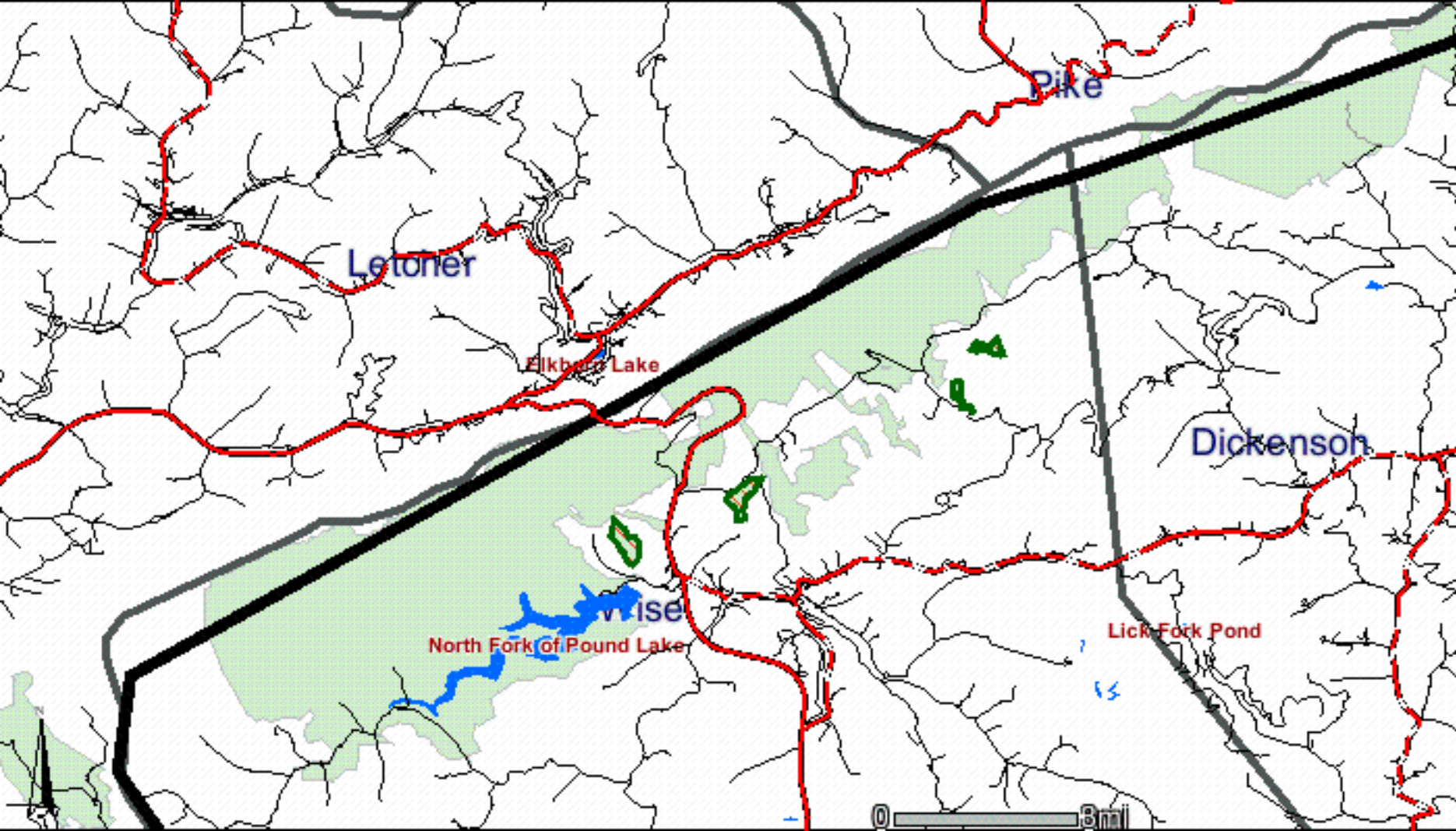


The next 4 maps show these tracts:

Tract	Acres
J-550i	50.29
J-550p	45.12
J-550n	16.13
J-550o	19.99

**Each of the next 4 maps contain all tracts listed above.
The different maps offer a closer look at these tracts.**



Letoher

Pike

Fikber Lake

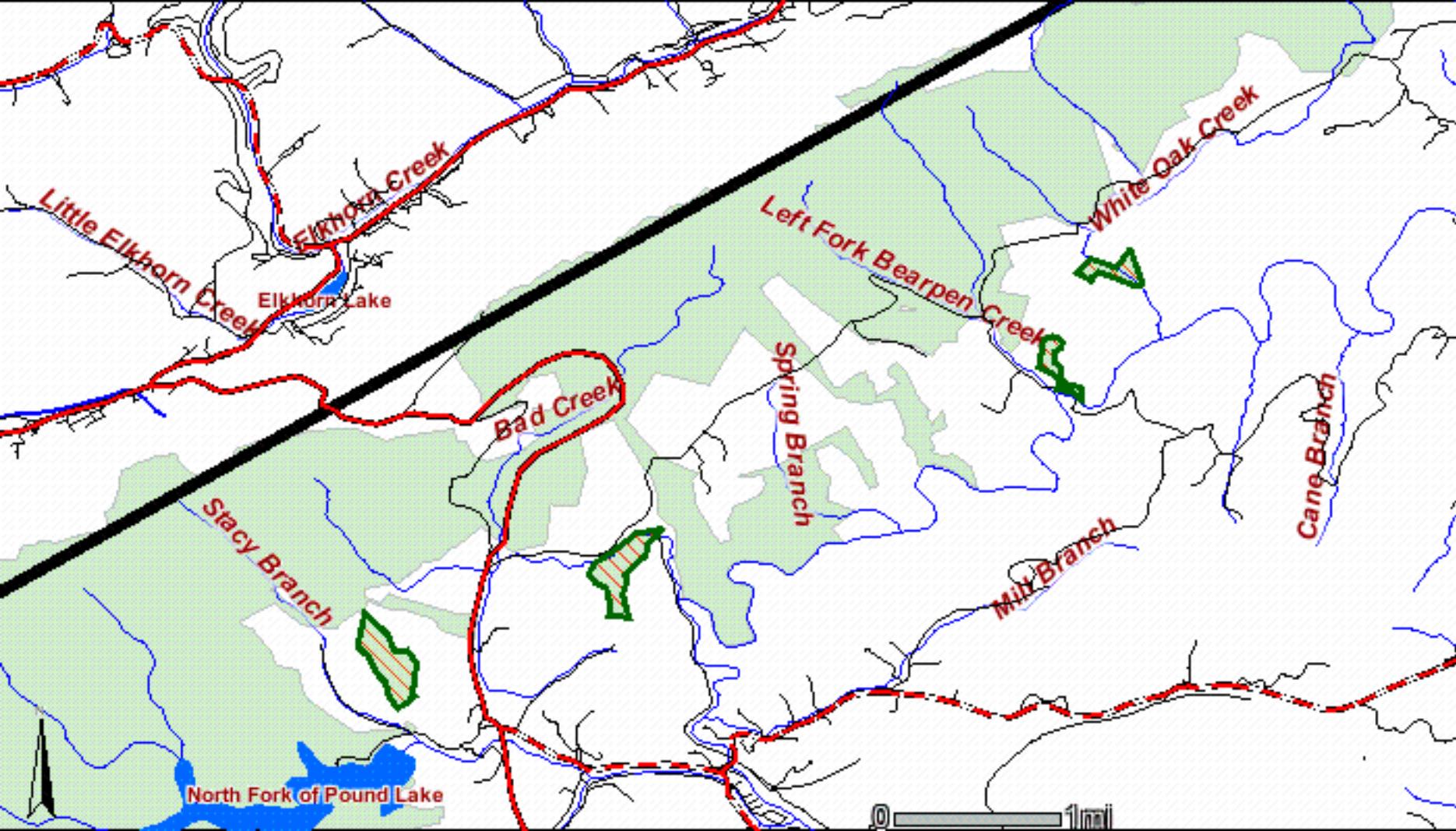
Dickenson

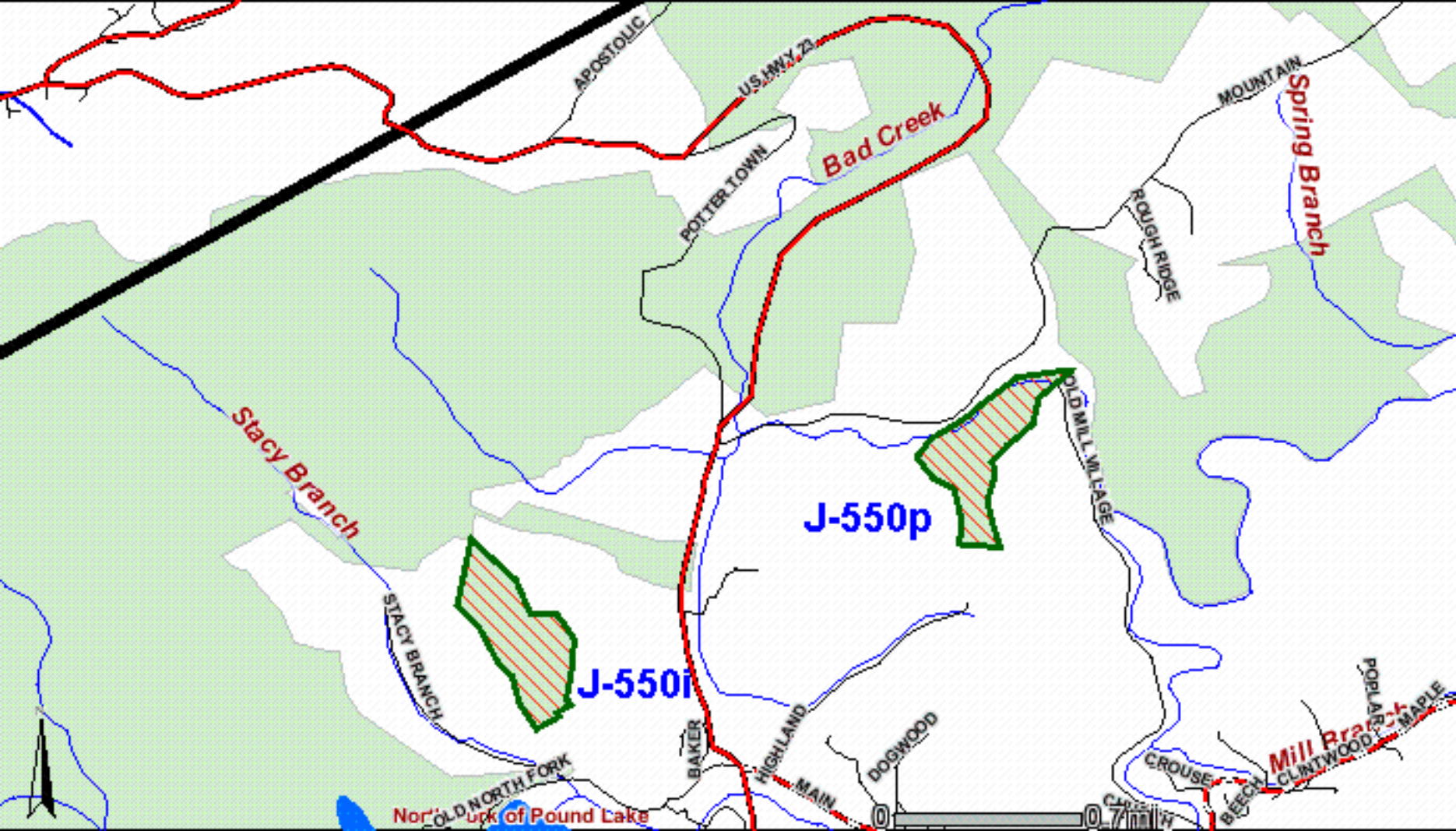
Wise

North Fork of Pound Lake

Lick Fork Pond

0 3mi





APOSTOLIC

US HWY 23

MOUNTAIN

POTTER TOWN

Bad Creek

Spring Branch

ROUGH RIDGE

Stacy Branch

J-550p

OLD MILL VILLAGE

STACY BRANCH

J-550i

BAKER

HIGHLAND

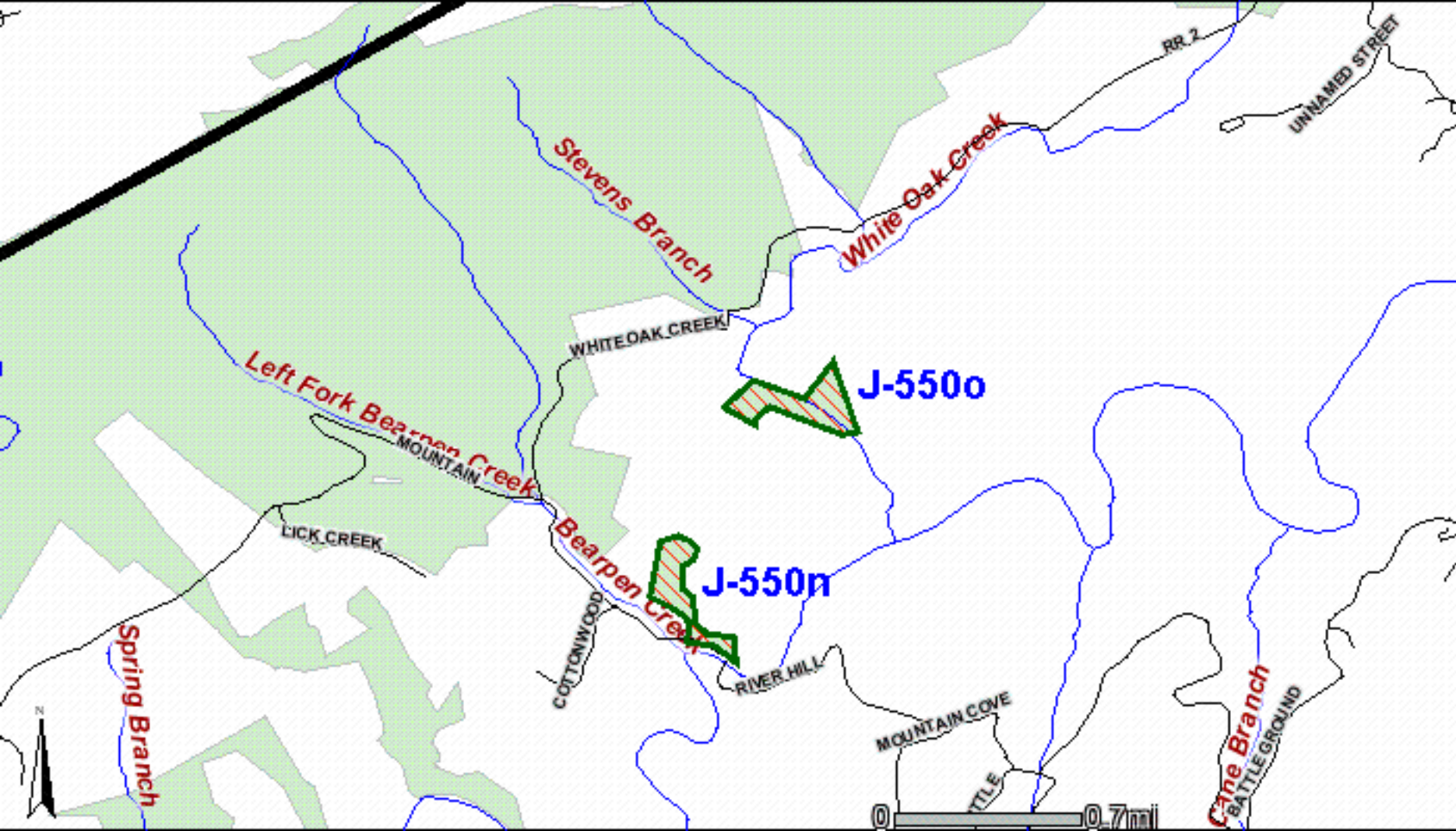
DOGWOOD

POPLAR
CLINTWOOD
MAPLE

Northern Fork of Pound Lake

CROUSE

Mill Branch
BEECH



Stevens Branch

White Oak Creek

RR 2

UNNAMED STREET

WHITE OAK CREEK

J-550o

Left Fork Bearpen Creek
MOUNTAIN

LICK CREEK

Bearpen Creek

J-550n

COTTONWOOD

RIVER HILL

MOUNTAIN COVE

TITLE

Cane Branch
BATTLEGROUND

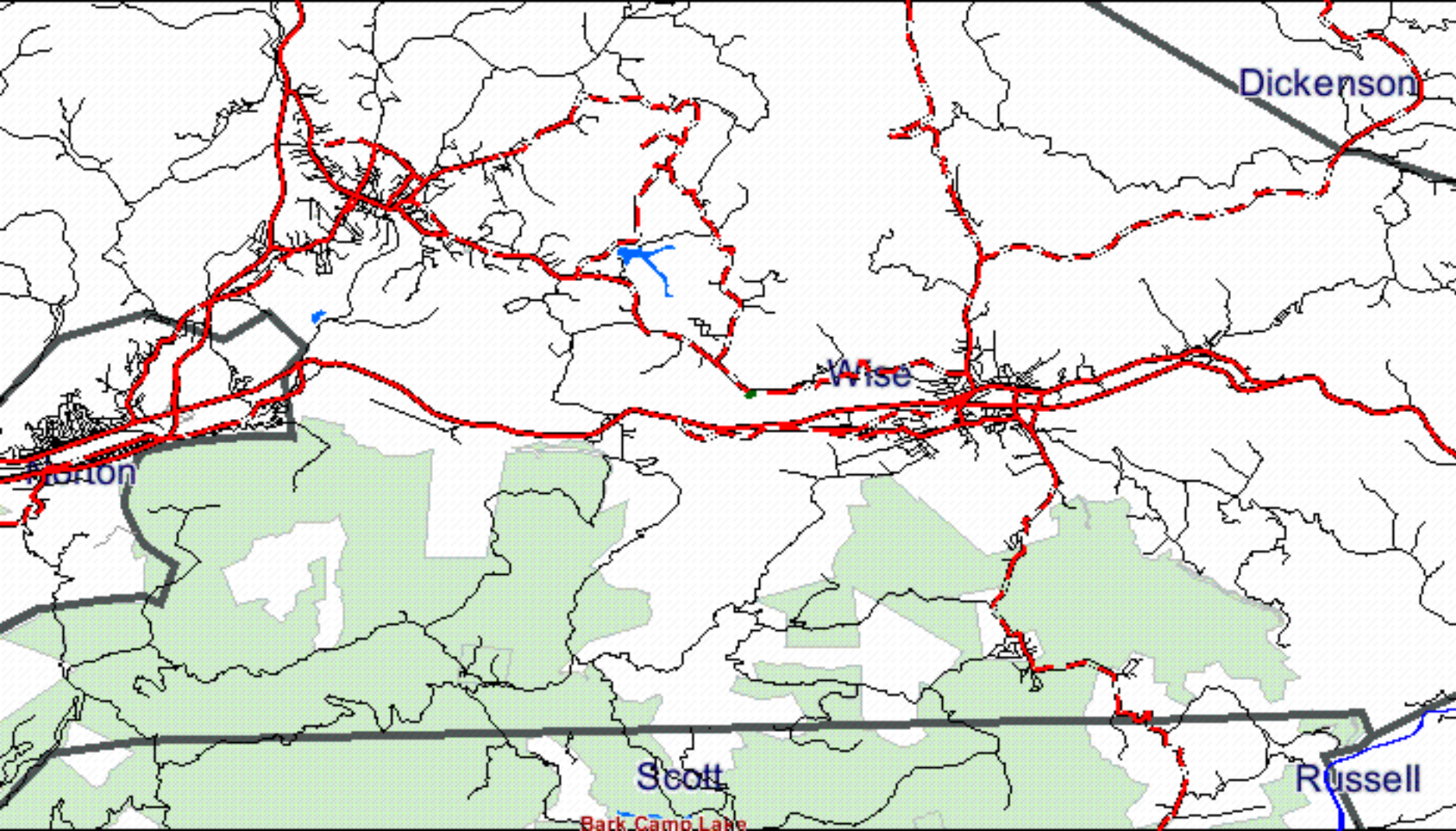
Spring Branch



The next 3 maps show these tracts:

Tract	Acres
J-512	1.10

**Each of the next 3 maps contain all tracts listed above.
The different maps offer a closer look at these tracts.**



Dickenson

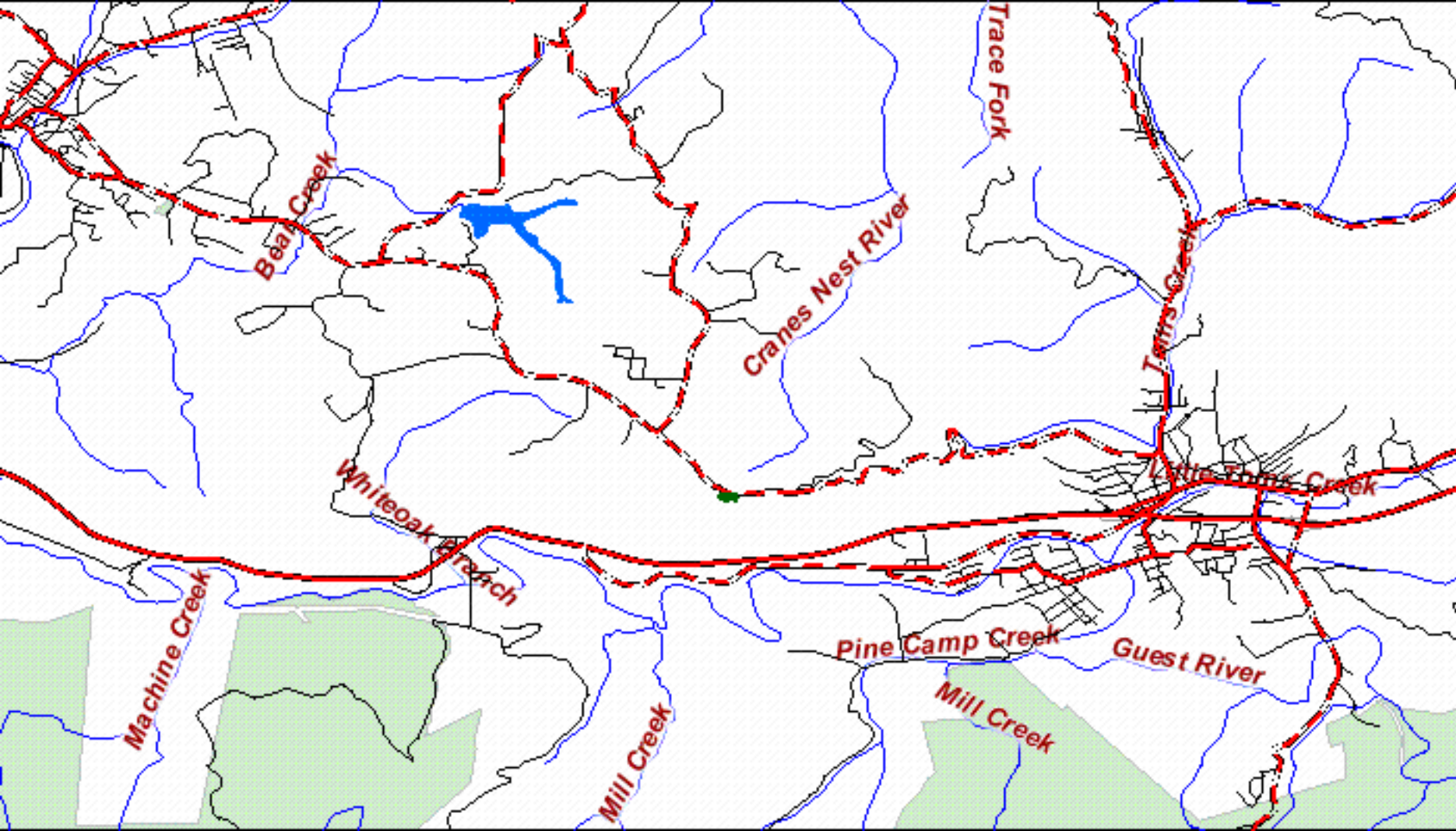
Wise

Worton

Scott

Russell

Back Camp Lake



Bear Creek

Crane's Nest River

Trace Fork

Toms Creek

Little Falls Creek

Whiteoak Branch

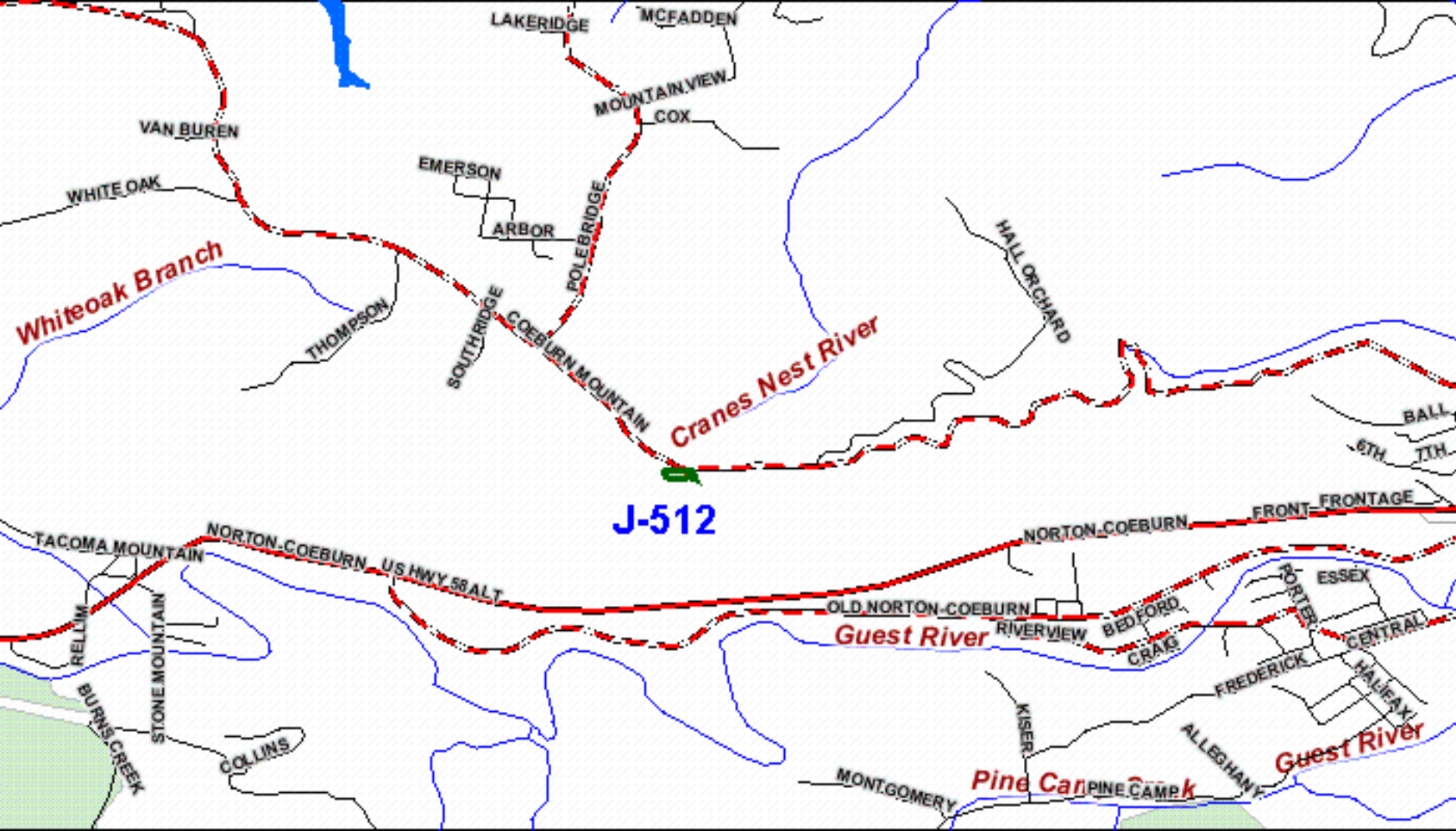
Pine Camp Creek

Guest River

Mill Creek

Mill Creek

Machine Creek



Maps created on March 2, 2006 using the U.S. Forest Service Geocommunicator.

All tracts listed have been identified using Forest Service maps; however, the Forest Service may adjust tracts.