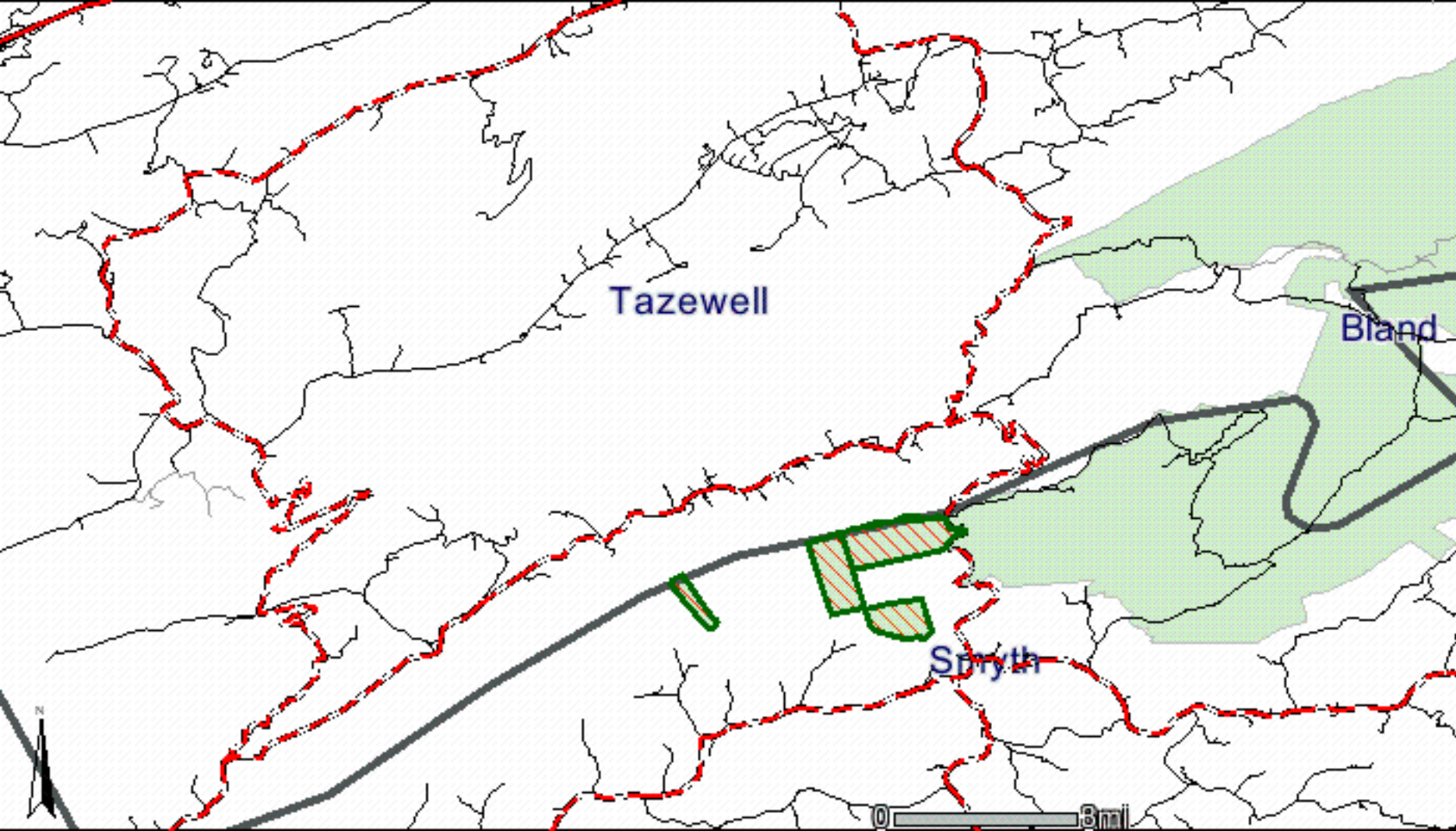


**The next 3 maps show these tracts:**

<b>Tract</b>	<b>Acres</b>
<b>J-1247a</b>	<b>0.13</b>
<b>J-1247b</b>	<b>1.05</b>
<b>J-1060</b>	<b>10.05</b>
<b>J-1247c *</b>	<b>150.42</b>

Each of the next 3 maps contain all tracts listed above.  
The different maps offer a closer look at these tracts.

\* Tract in Smyth County.

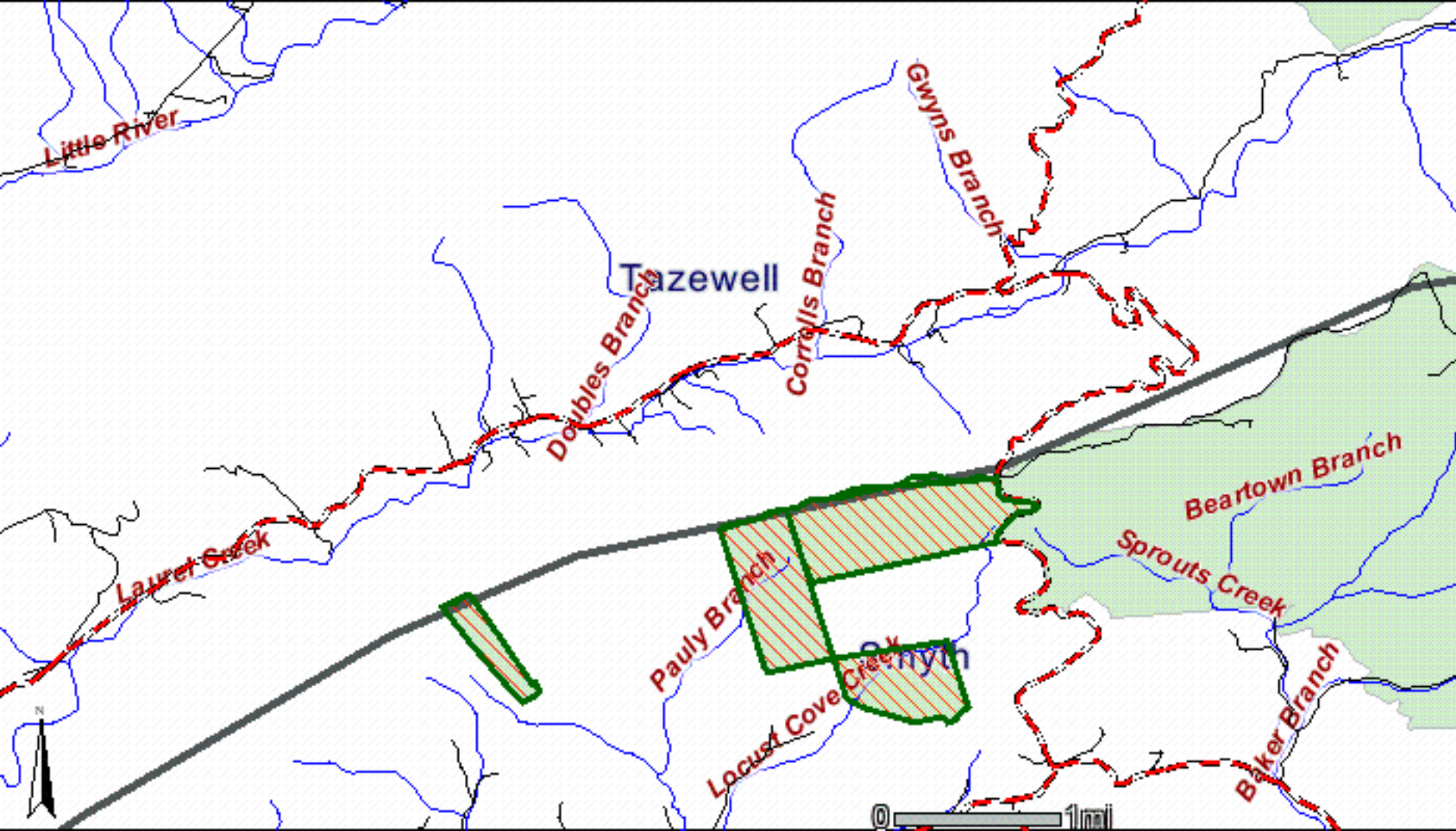


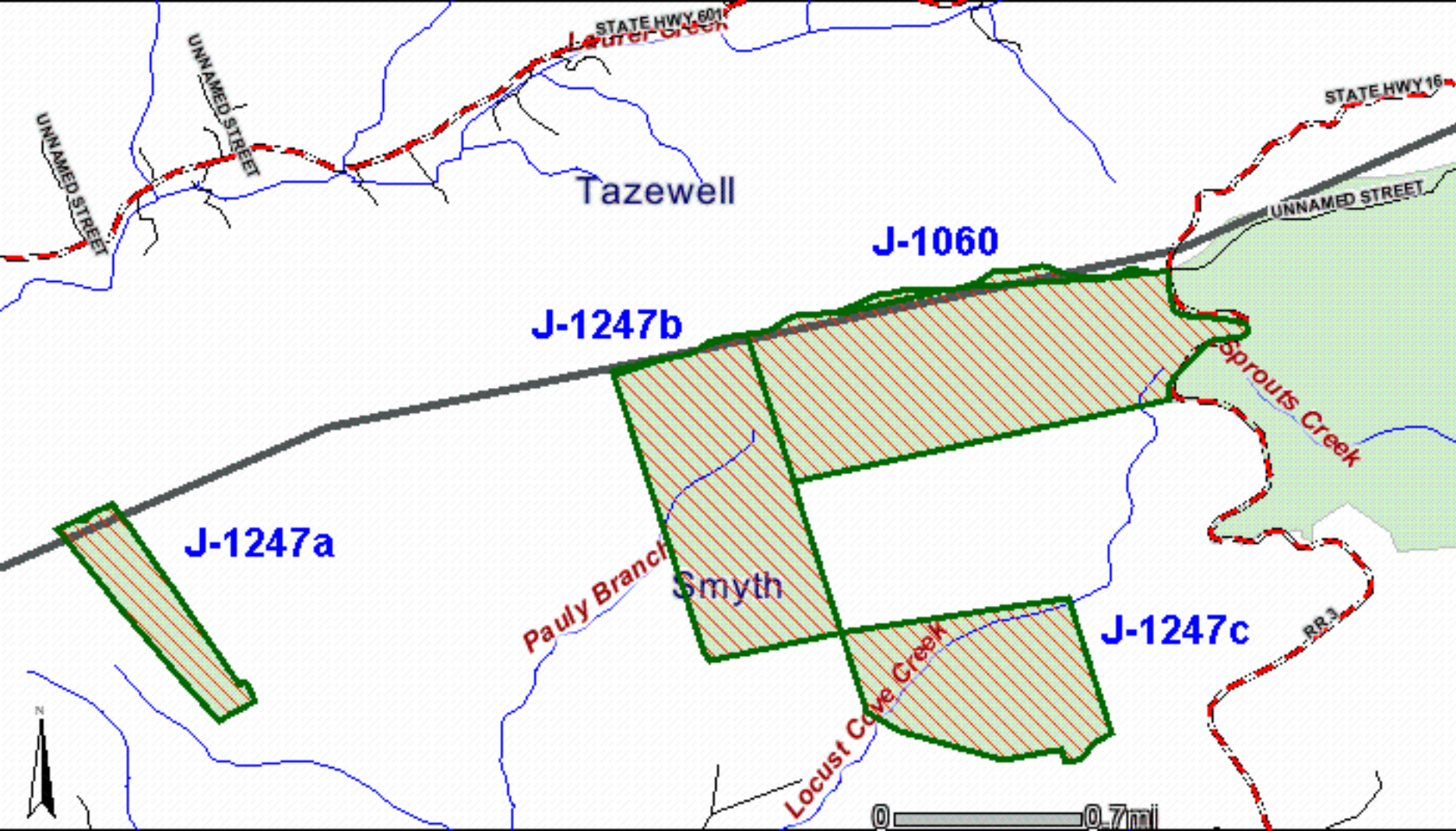
Tazewell

Bland

Smyth

0 3mi



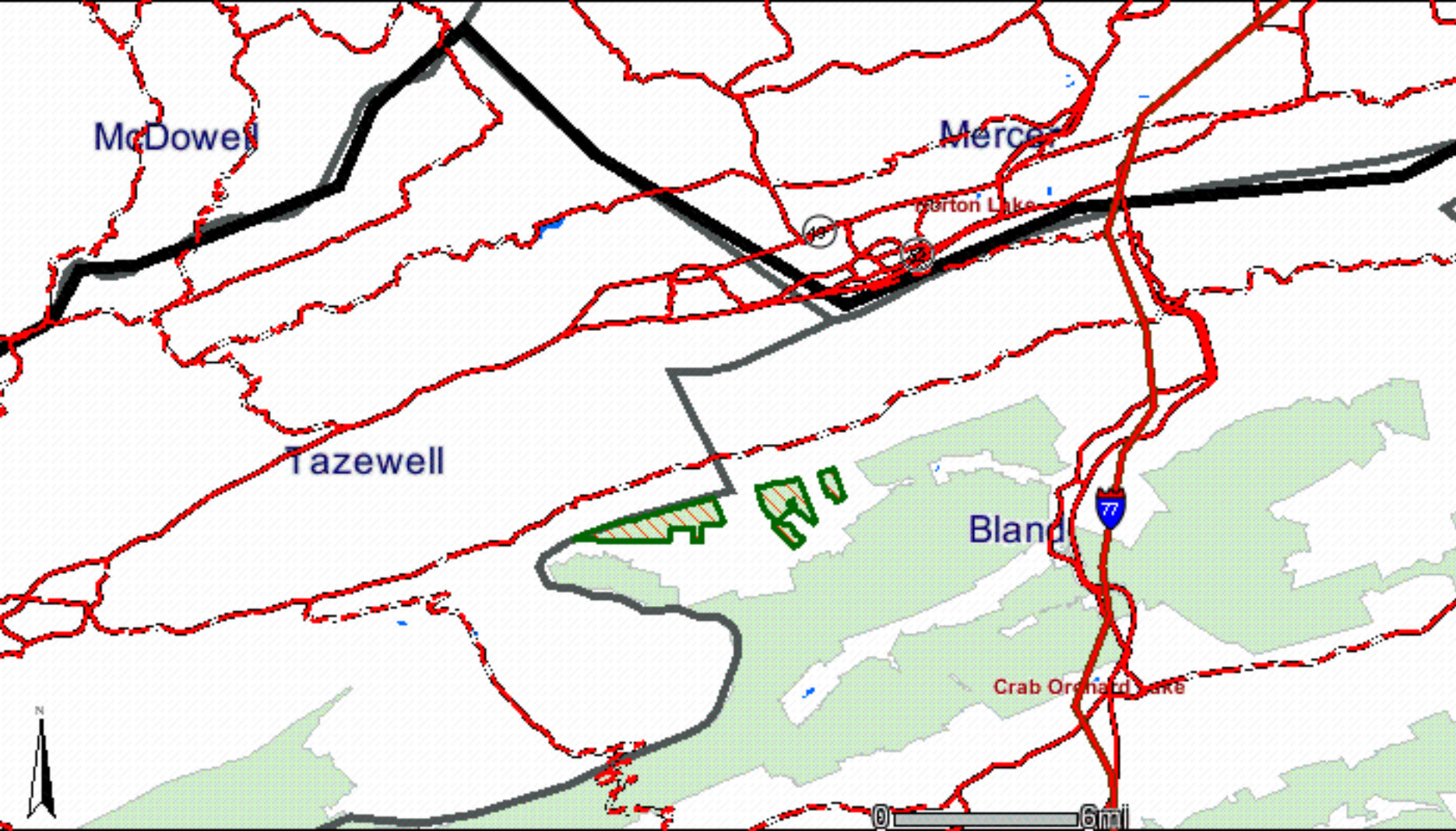


**The next 3 maps show these tracts:**

<b>Tract</b>	<b>Acres</b>
<b>J-1101c</b>	<b>0.76</b>
<b>J-1101d*</b>	<b>568.29</b>
<b>J-1101e*</b>	<b>141.13</b>

Each of the next 3 maps contain all tracts listed above.  
The different maps offer a closer look at these tracts.

\* These tracts located in Bland County.



McDowell

Mercer

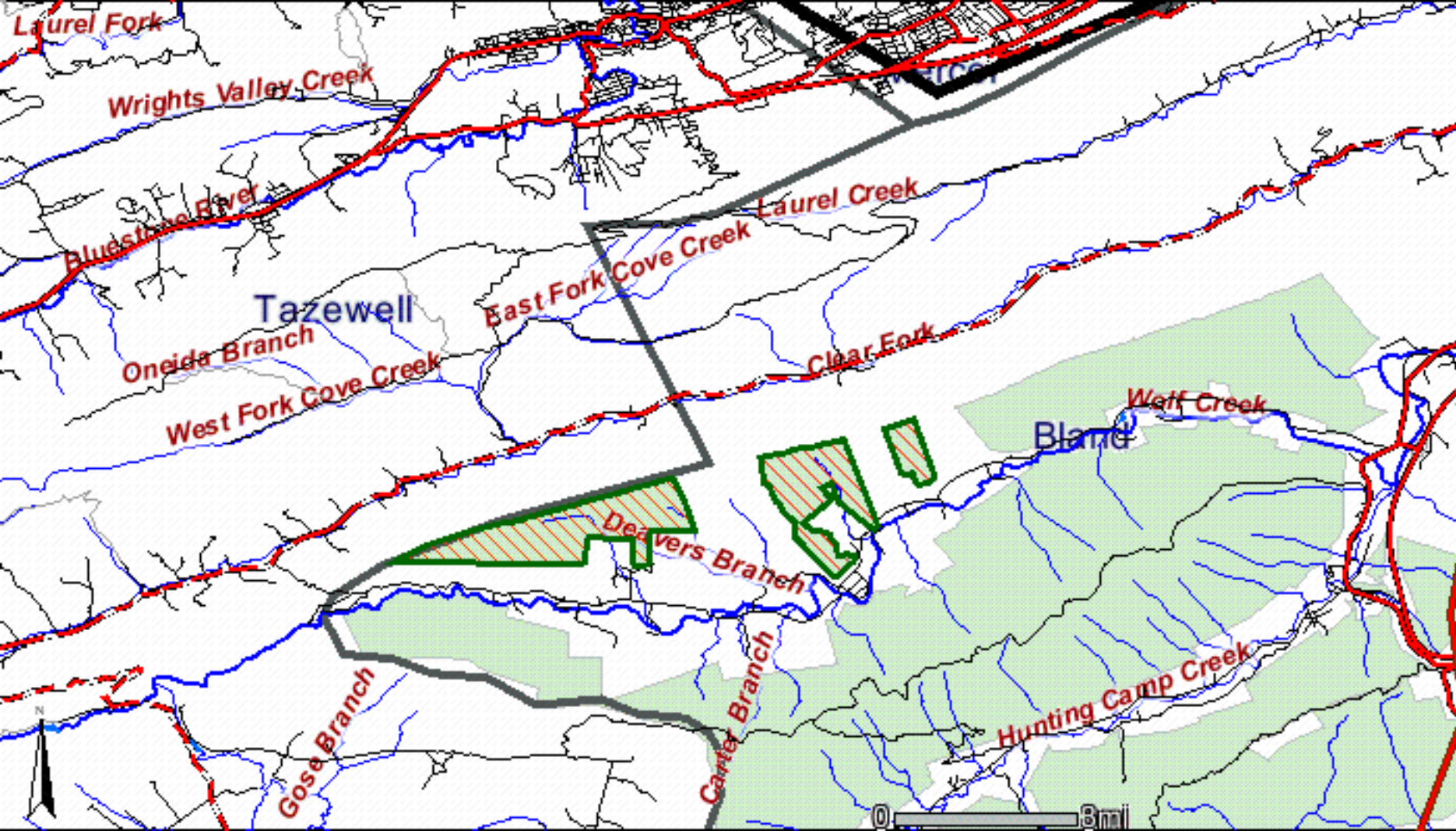
Tazewell

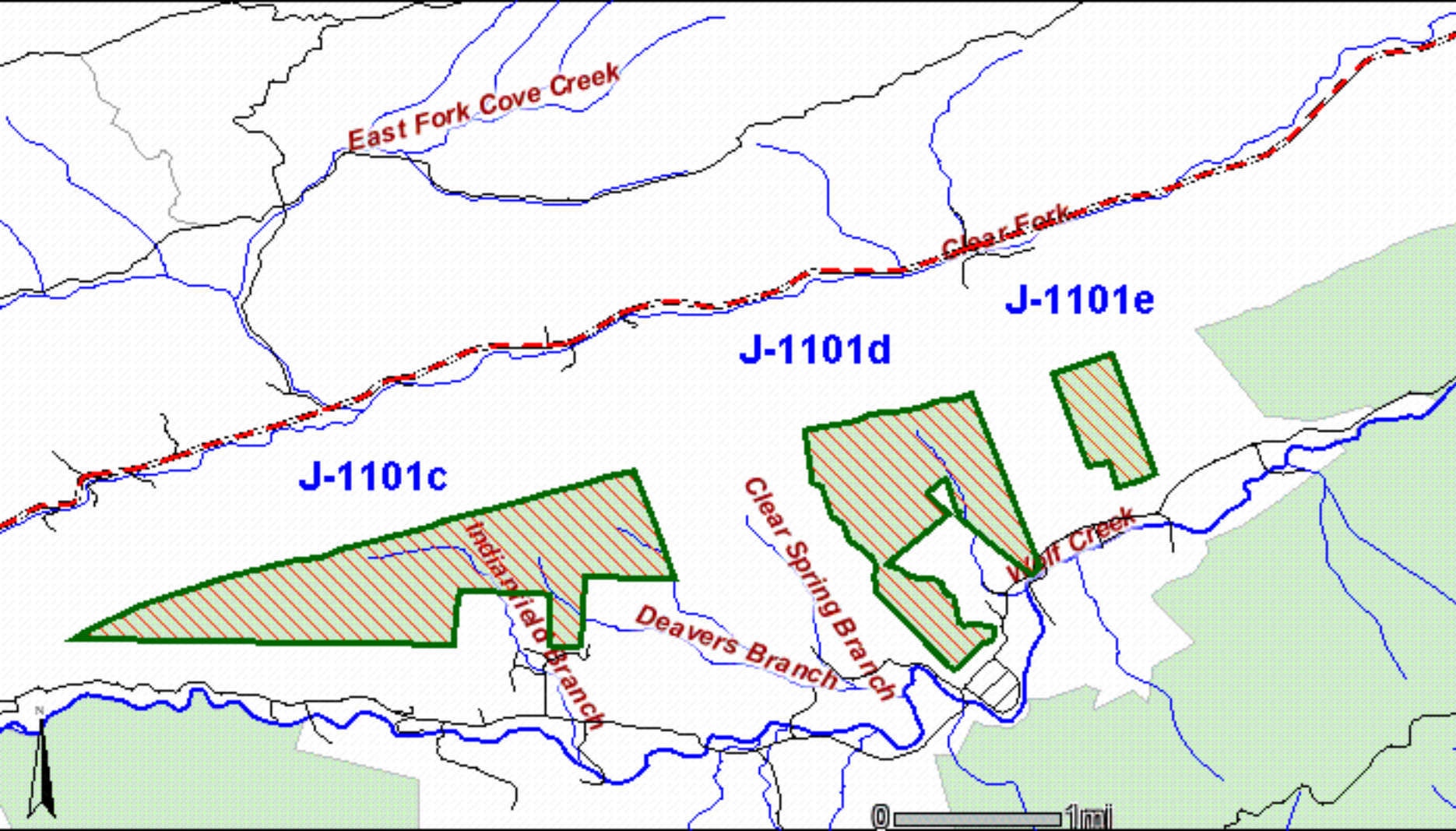
Bland

Barton Lake

Crab Orchard Lake







**Maps created on March 2, 2006 using the U.S. Forest Service Geocommunicator.**

**All tracts listed have been identified using Forest Service maps; however, the Forest Service may adjust tracts.**