

Bacova Lake

Bath

Waynesboro

Augusta

Lake Merriweather

Lake Wilda

Coles Run Reservoir

Kwanis Lake

Douthat Lake

Willow Lake

Sherando Lake

Clifton Forge Reservoir

Rockbridge

Robertson Lake

Pike Pond

Lexington

Lexington Reservoir

Nelson

Buena Vista

Lynchburg Reservoir

Botetourt

Amherst

Jones Pond

Cave Mountain Lake

Bedford

Otter Lake

Sweetbriar Lake

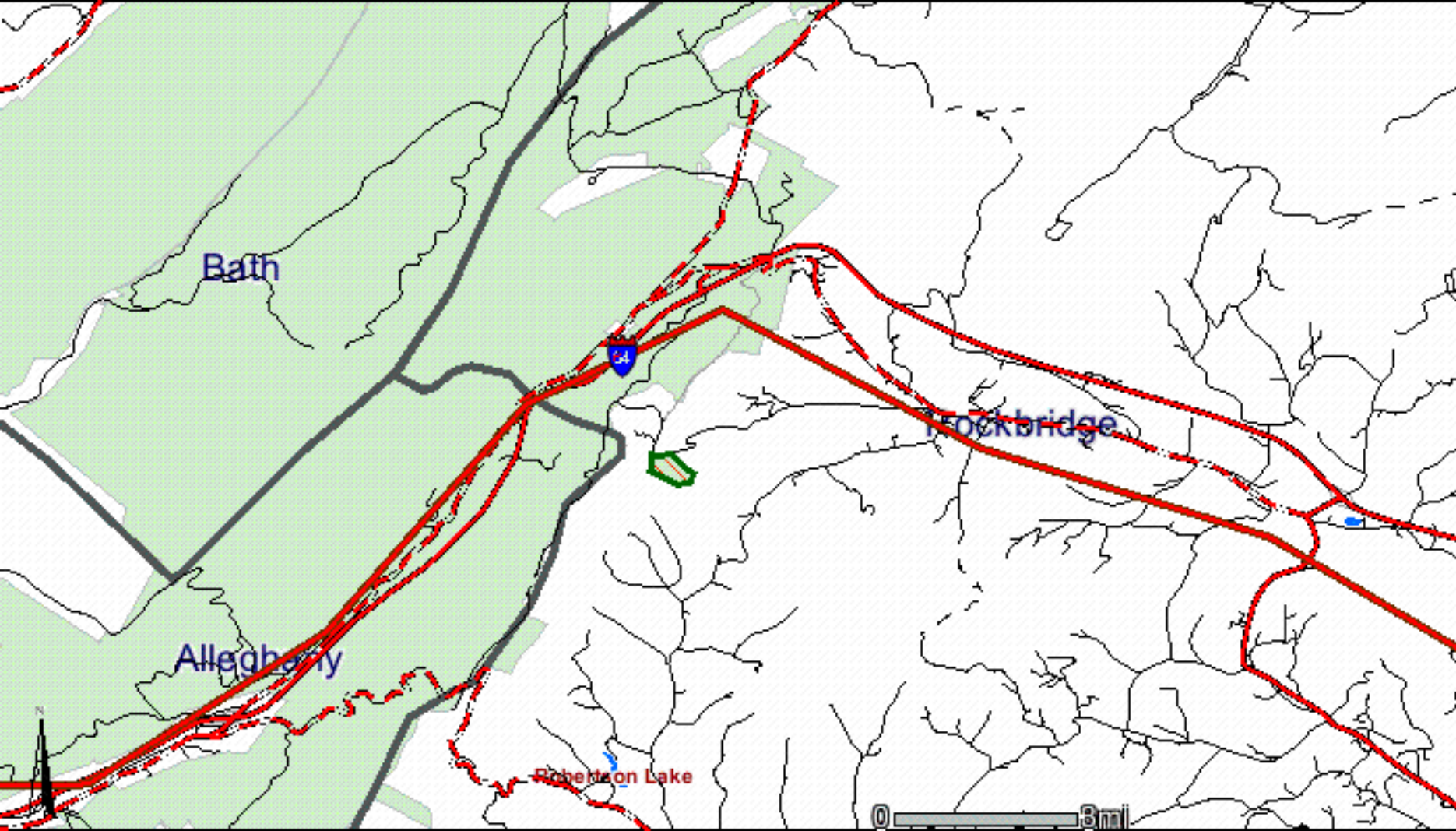
Early Lake



The next 3 maps show these tracts:

Tract	Acres
J-526	64.47

**Each of the next 3 maps contain all tracts listed above.
The different maps offer a closer look at these tracts.**



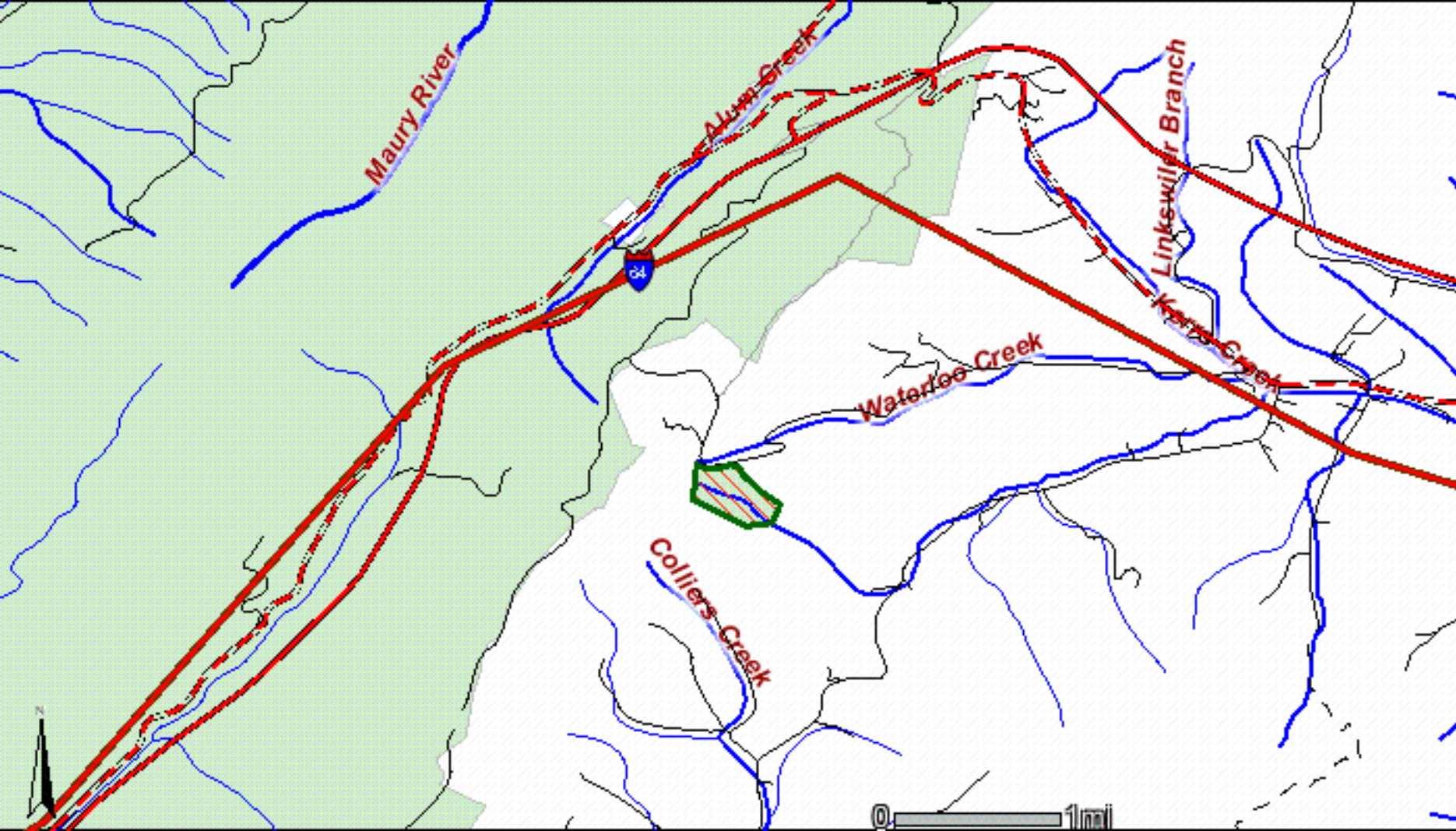
Bath

Allegheny

Rockbridge

Robertson Lake





Maury River

Alum Creek

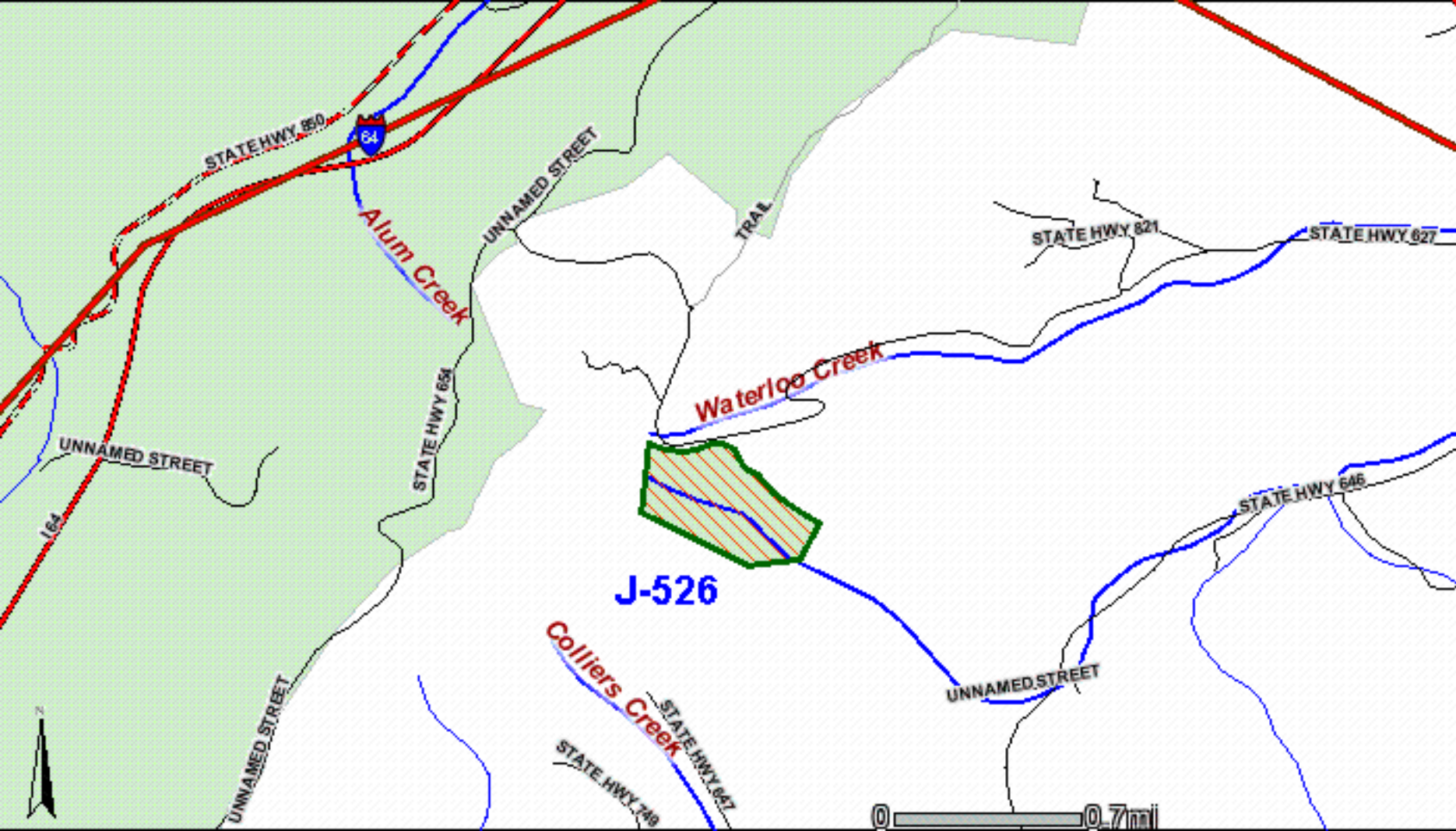
Linkewiller Branch

Waterloo Creek

Colliers Creek

Kenton Creek





STATE HWY 64

Alum Creek

UNNAMED STREET

TRAIL

STATE HWY 627

STATE HWY 627

Waterloo Creek

UNNAMED STREET

164

STATE HWY 65A

STATE HWY 646

J-526

Colliers Creek

STATE HWY 798

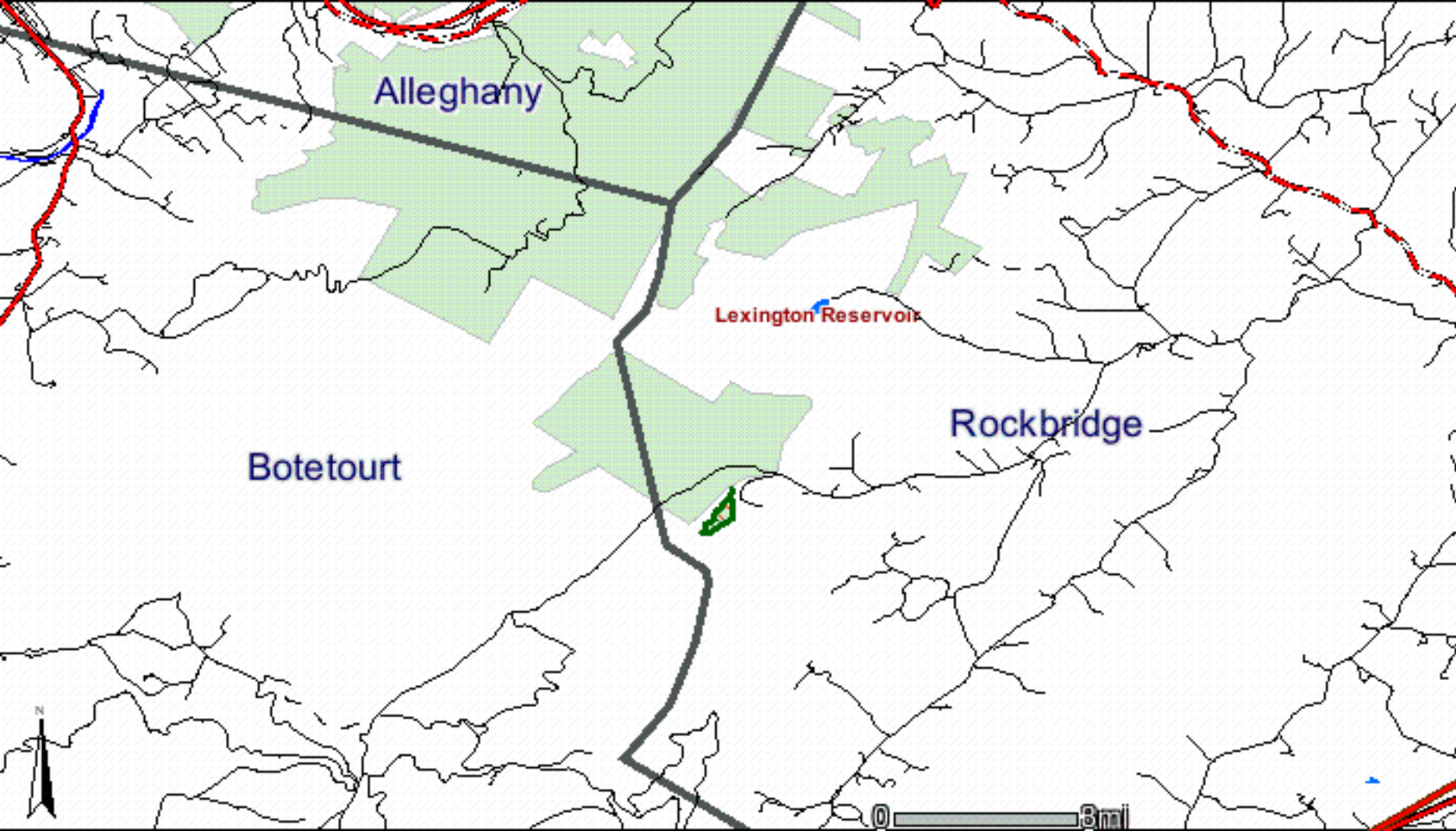
UNNAMED STREET



The next 3 maps show these tracts:

Tract	Acres
J-133c-l	33.65
J-133c	0.25

**Each of the next 3 maps contain all tracts listed above.
The different maps offer a closer look at these tracts.**



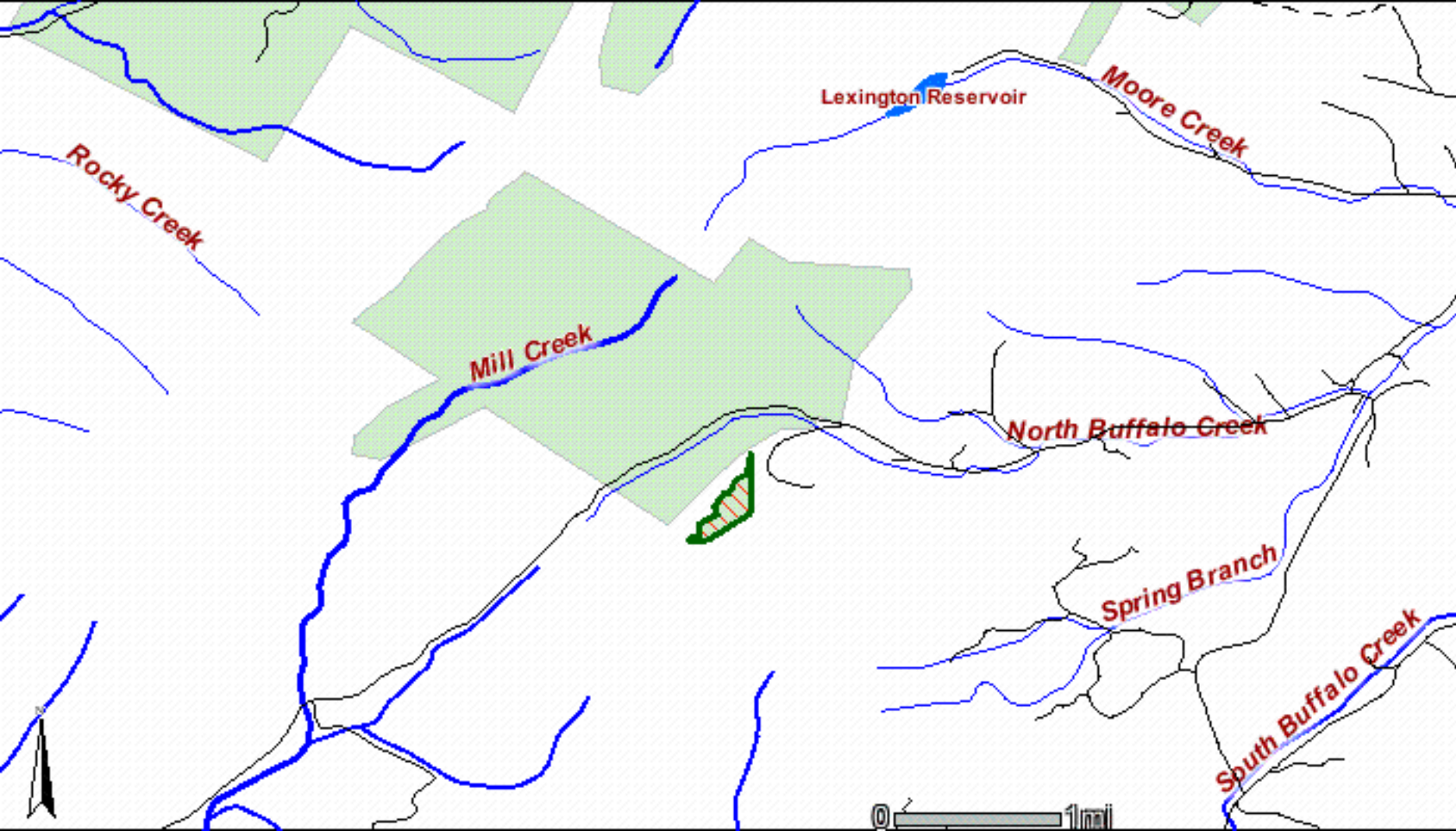
Allegheny

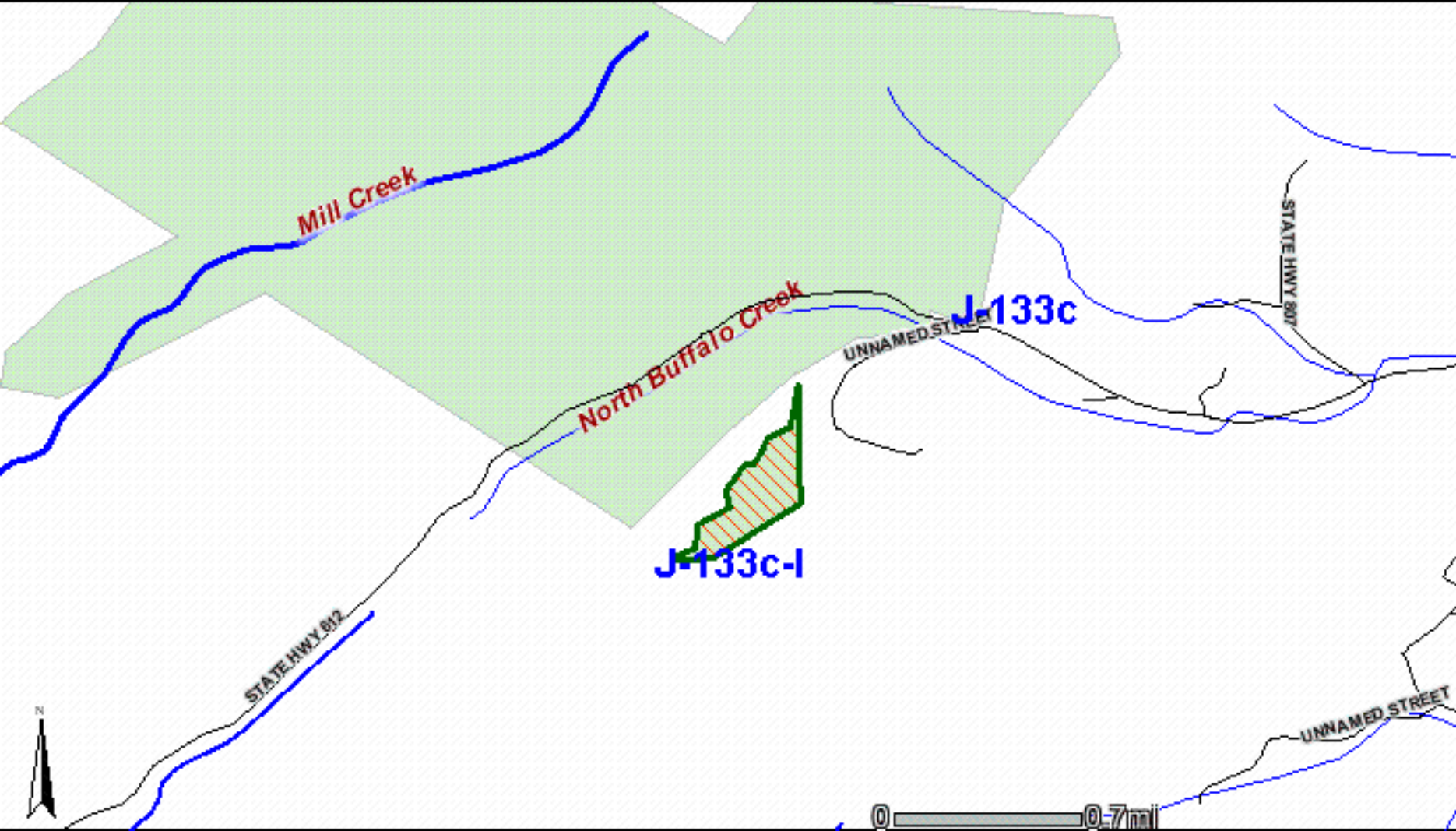
Lexington Reservoir

Rockbridge

Botetourt







Mill Creek

North Buffalo Creek

J-133c

J-133c-I

STATE HWY 802

STATE HWY 802

UNNAMED STREET

UNNAMED STREET



Maps created on March 2, 2006 using the U.S. Forest Service Geocommunicator.

All tracts listed have been identified using Forest Service maps; however, the Forest Service may adjust tracts.