

Monroe

Mercer

Giles

Mountain Lake

Craig

Pandapas Pond

Hoge Pond

Salem

Roanoke

Wildcat Lake

Bland

Montgomery

Radford

Gatewood Reservoir

Hogan Lake

Claytor Lake

Lake Powhatan

Pulaski

Franklin

Wythe

Floyd

Carroll

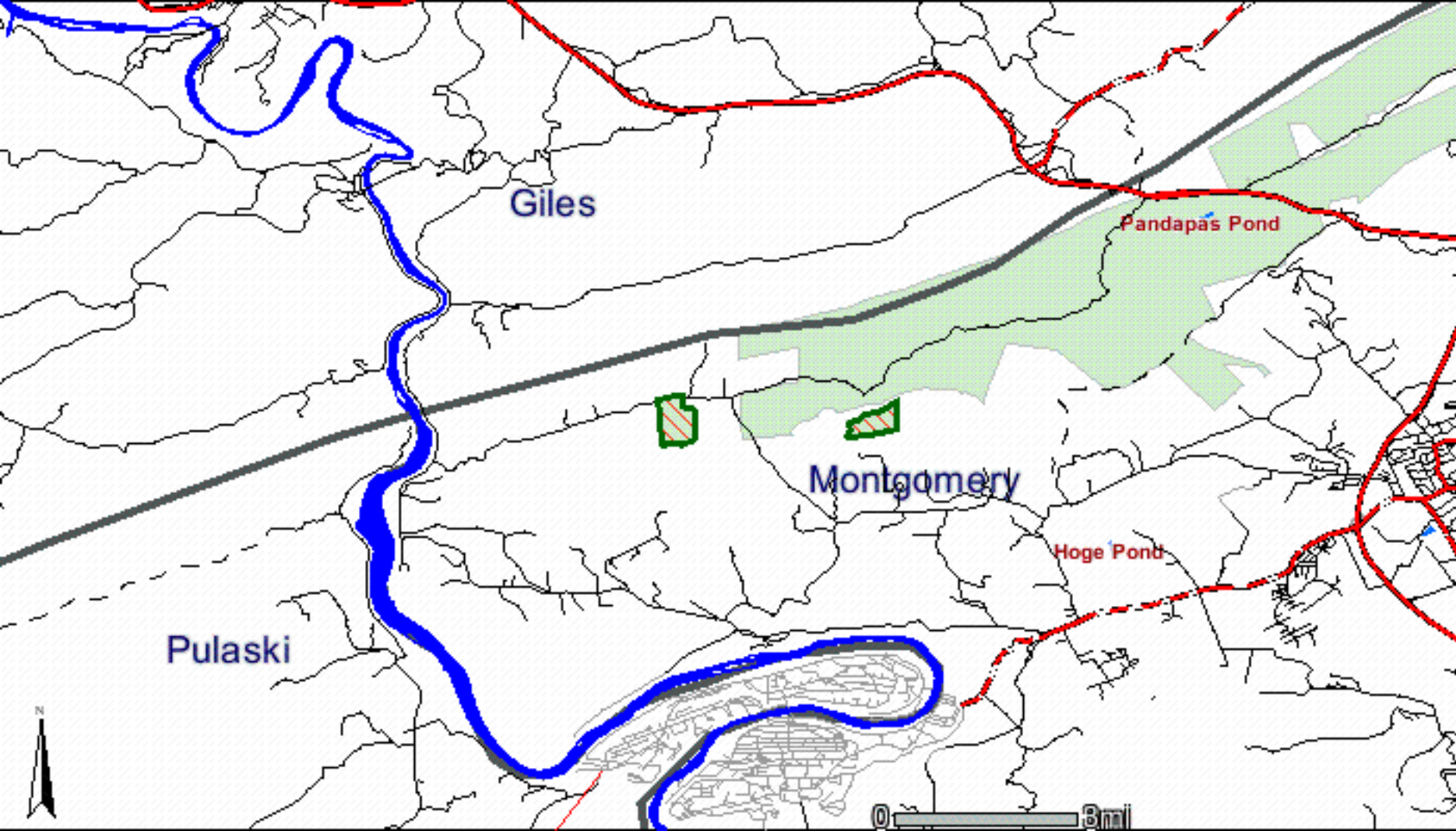
Patrick

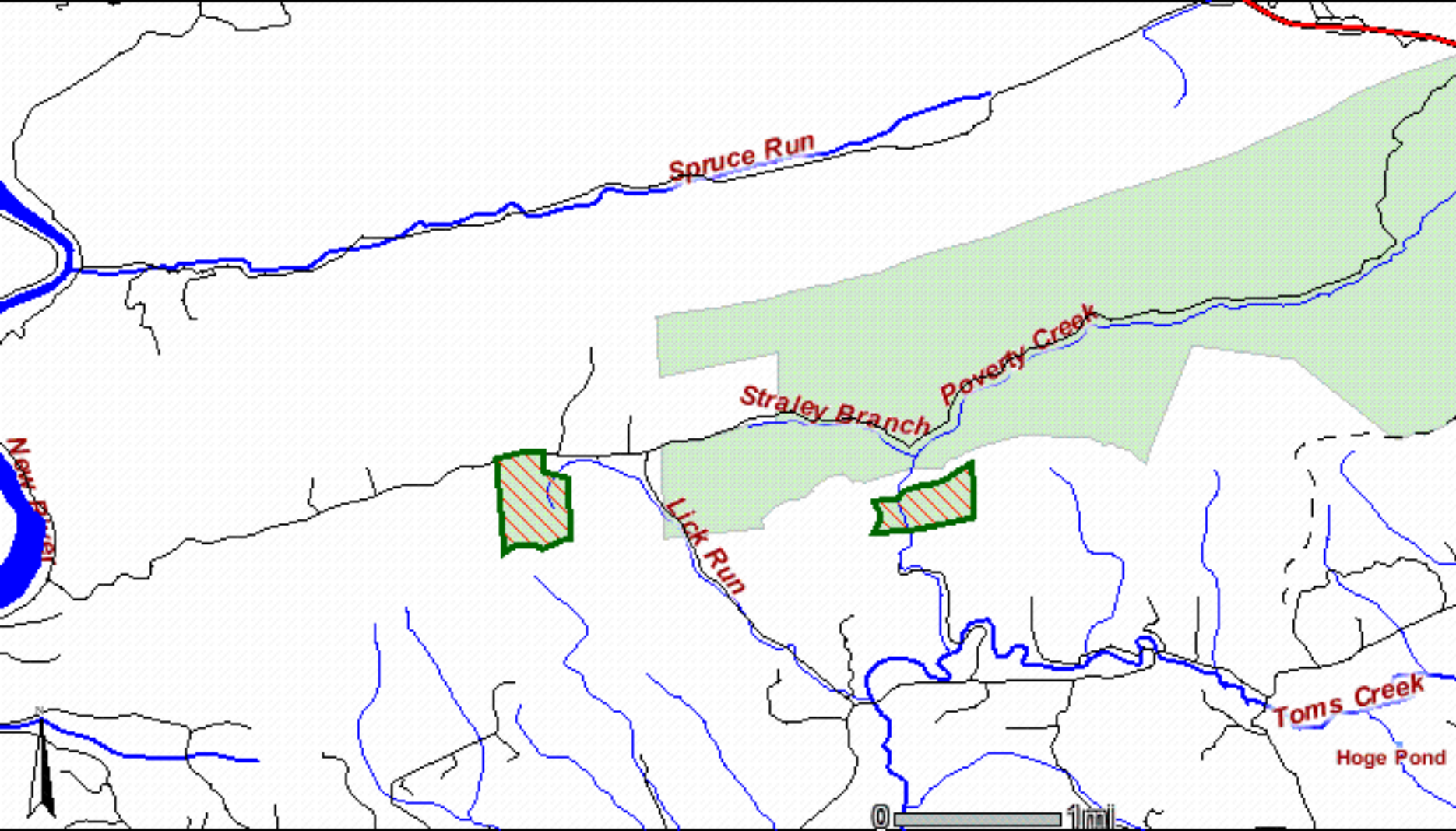


**The next 3 maps show these tracts:**

<b>Tract</b>	<b>Acres</b>
<b>J-605b</b>	<b>111.31</b>
<b>J-602a</b>	<b>76.54</b>

**Each of the next 3 maps contain all tracts listed above.  
The different maps offer a closer look at these tracts.**





Spruce Run

Poverty Creek

Straley Branch

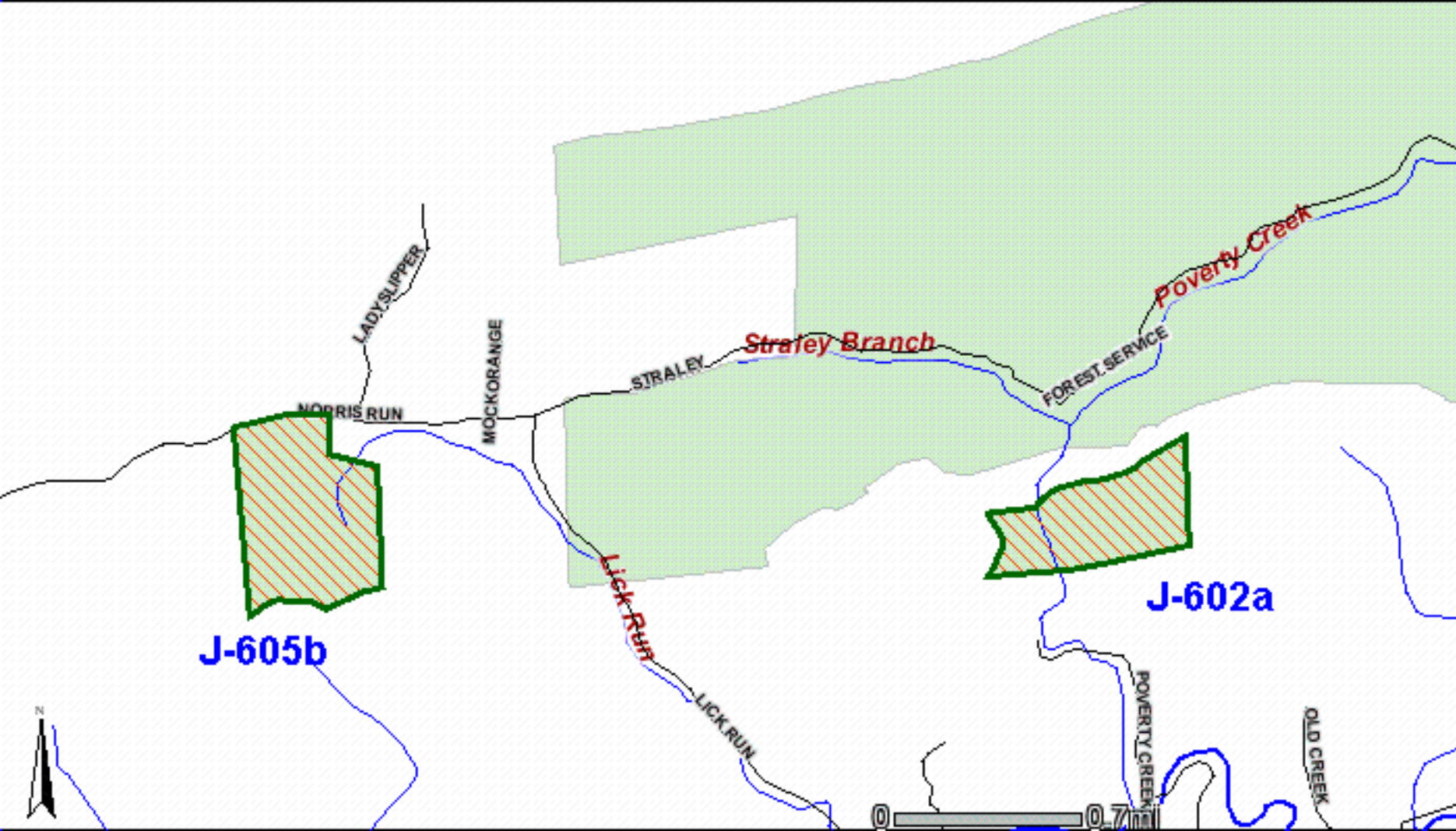
Lick Run

Toms Creek

Hoge Pond

North Branch





LADY SLIPPER

NORRIS RUN

MOCKORANGE

STRALEY

Straley Branch

FOREST SERVICE

Poverty Creek

Lick Run

LICK RUN

POVERTY CREEK

OLD CREEK

J-605b

J-602a

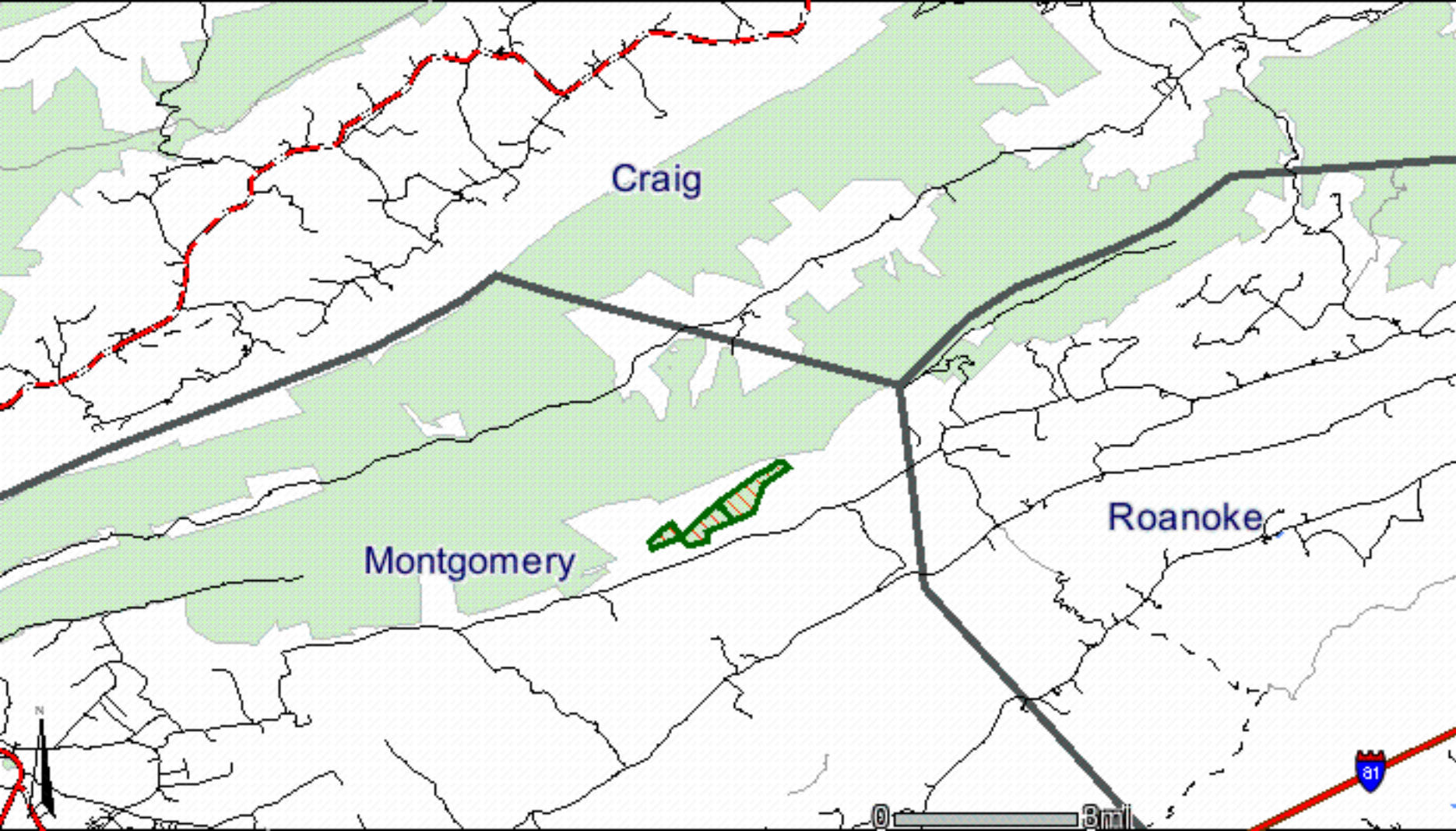
N

0 0.7

**The next 3 maps show these tracts:**

<b>Tract</b>	<b>Acres</b>
<b>J-583</b>	<b>28.58</b>
<b>J-381</b>	<b>68.26</b>
<b>J-632</b>	<b>105.48</b>

**Each of the next 3 maps contain all tracts listed above.  
The different maps offer a closer look at these tracts.**



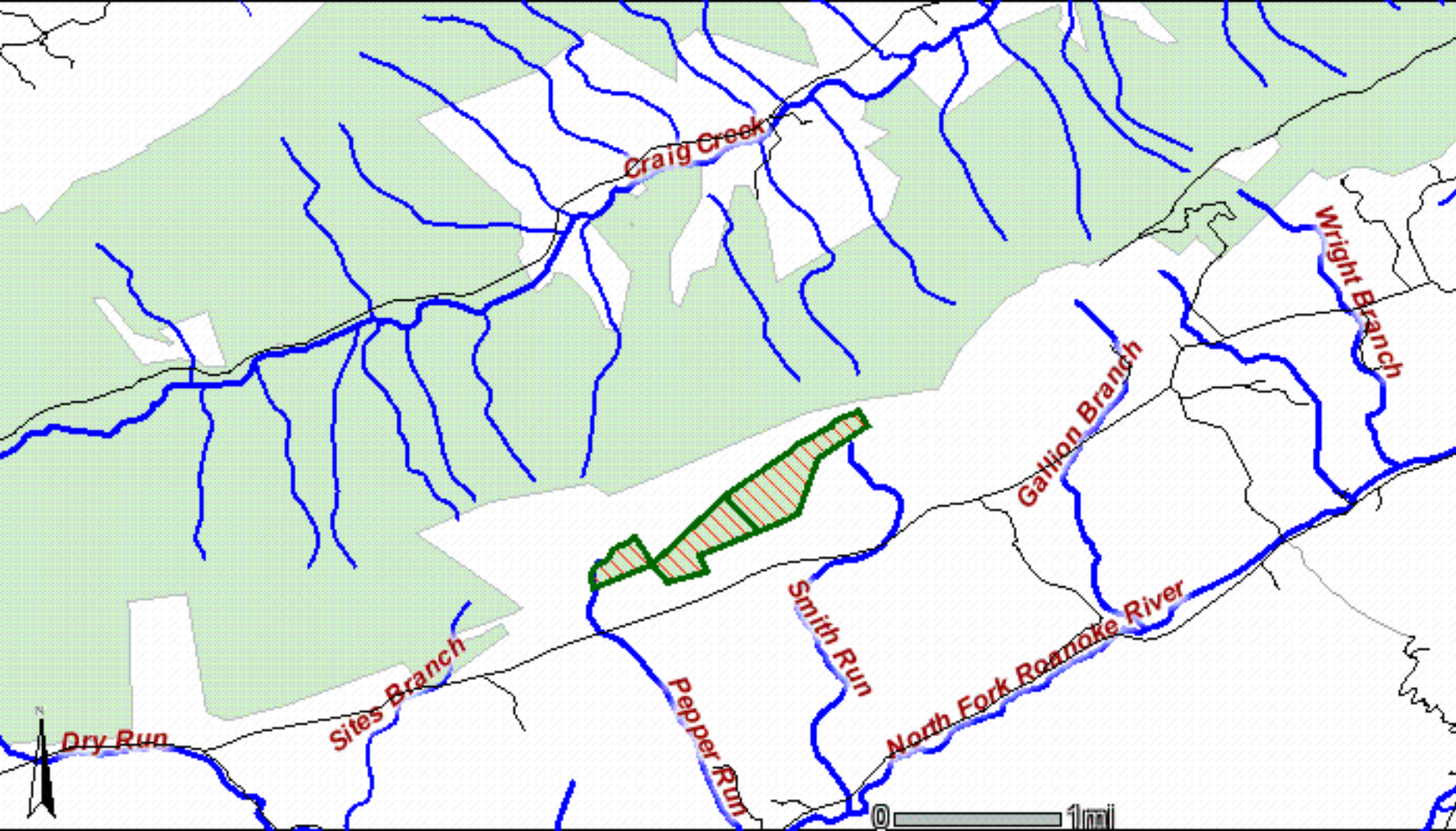
Craig

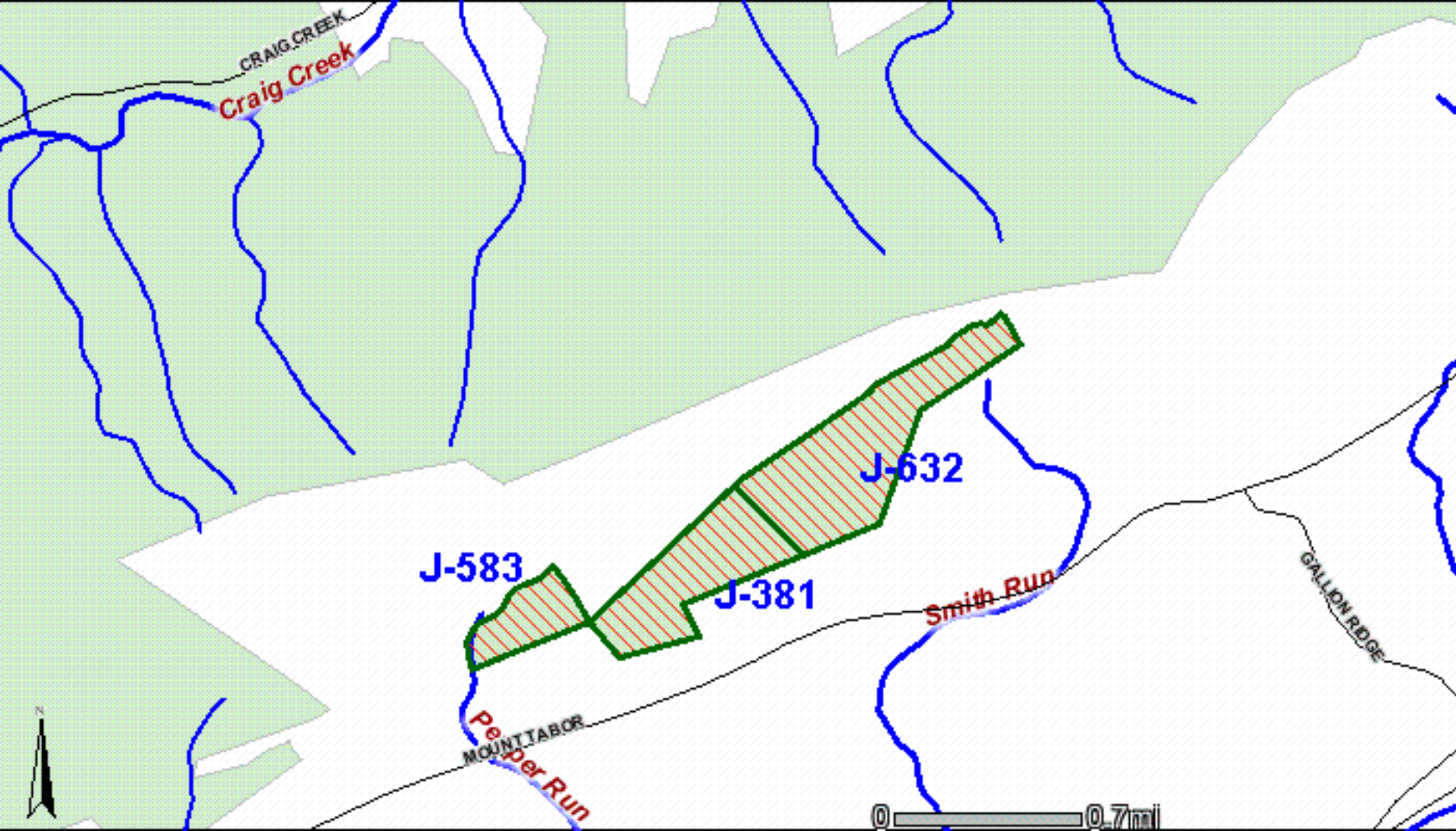
Montgomery

Roanoke

31

0 8 mi





CRAIG CREEK  
**Craig Creek**

**J-583**

**J-381**

**J-632**

**Smith Run**

GALLON RIDGE

MOUNT TABOR

**Pepper Run**

0 0.7mi



**Maps created on March 2, 2006 using the U.S. Forest Service Geocommunicator.**

**All tracts listed have been identified using Forest Service maps; however, the Forest Service may adjust tracts.**