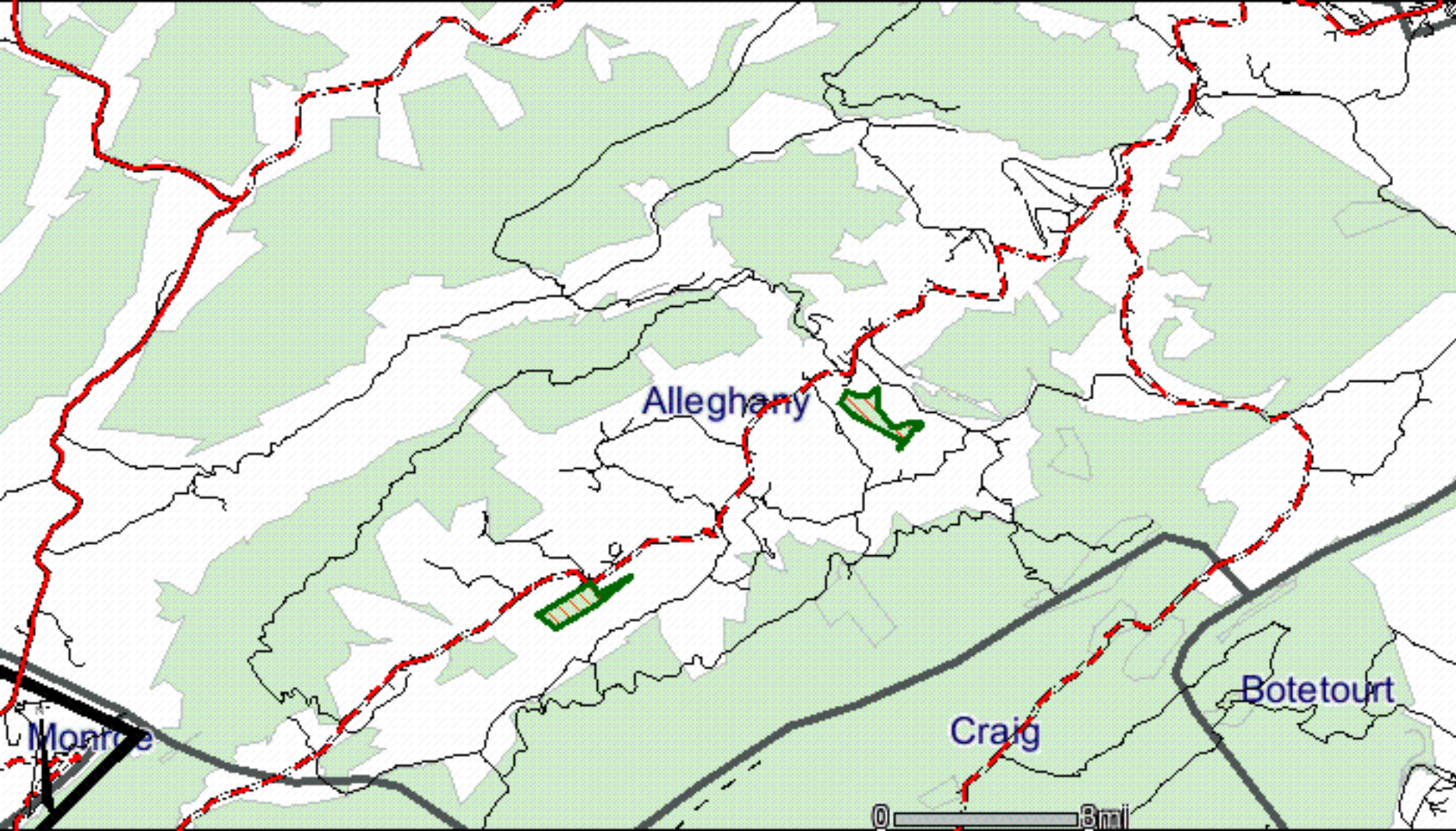


The next 4 maps show these tracts:

Tract	Acres
L-14g	107.35
L-14n	109.14

**Each of the next 4 maps contain all tracts listed above.
The different maps offer a closer look at these tracts.**



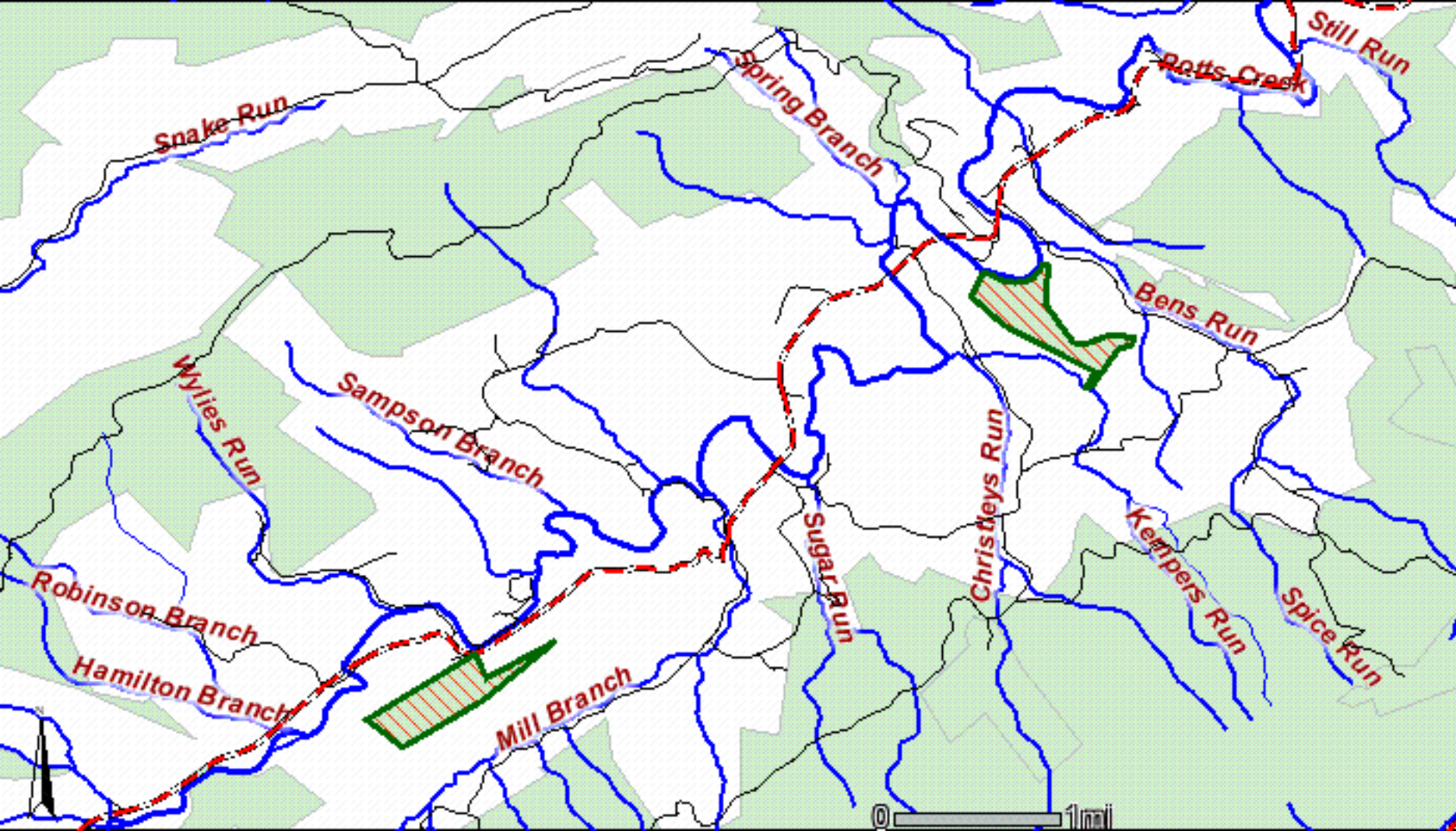
Allegheny

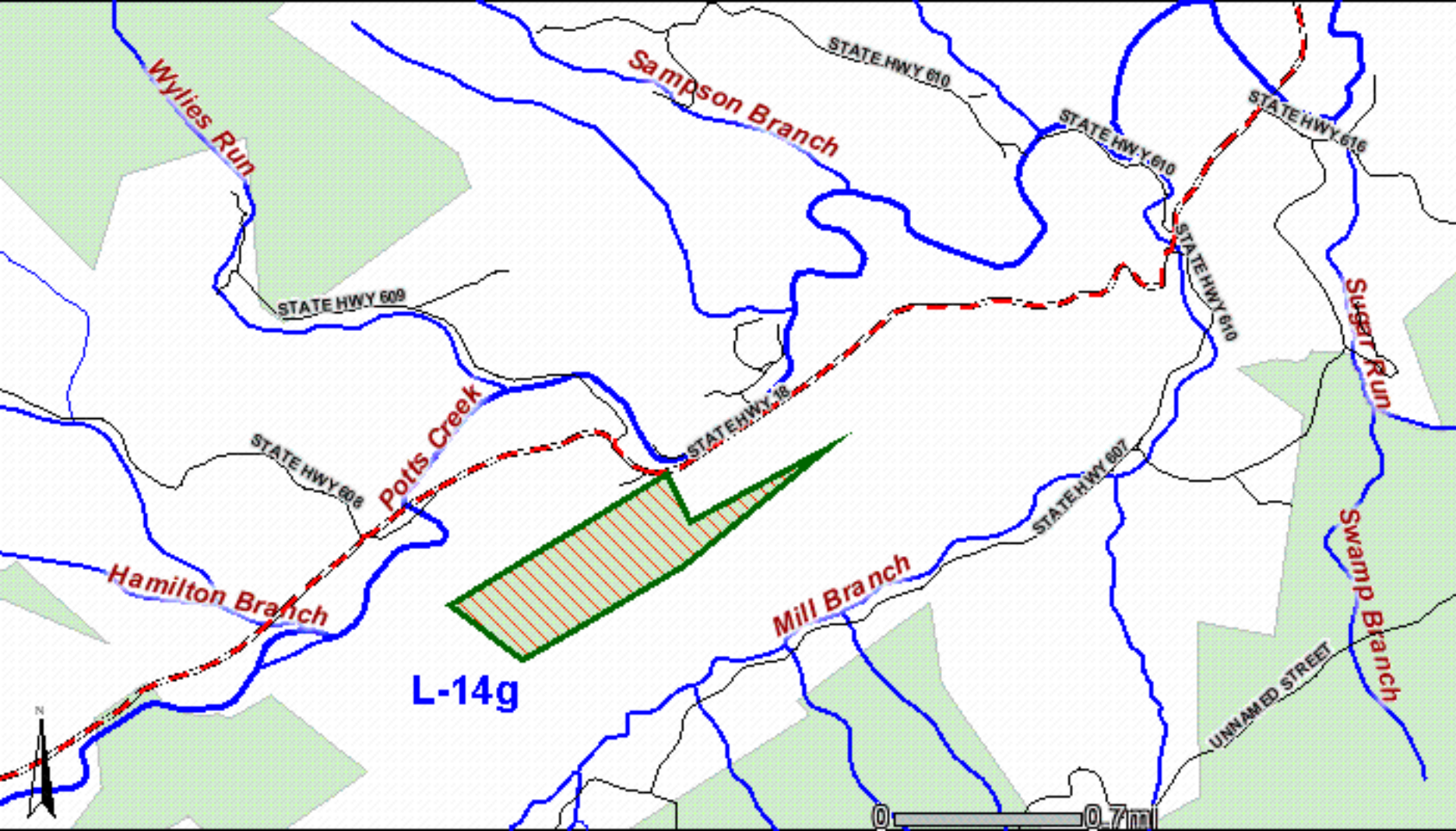
Craig

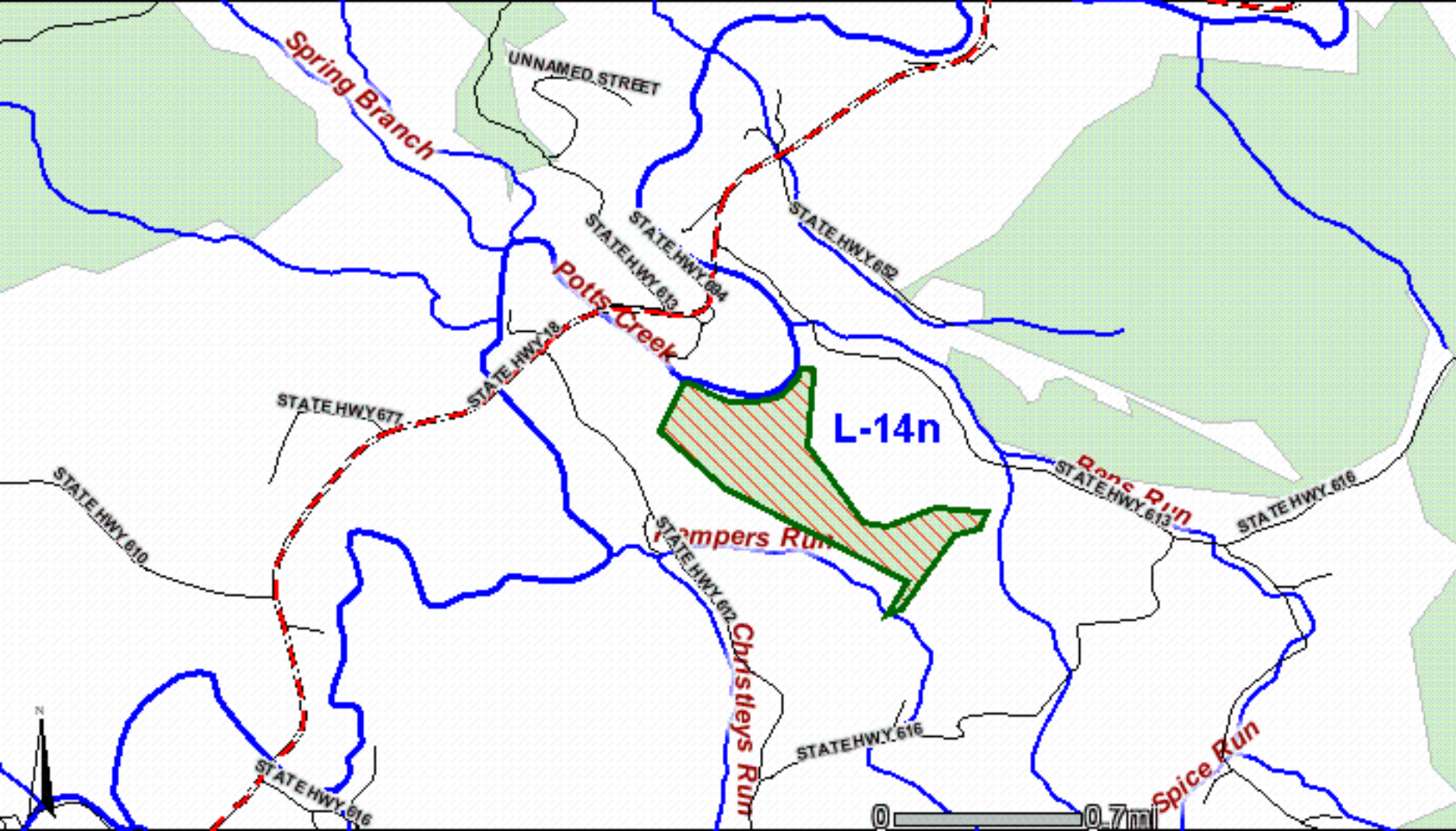
Botetourt

Monroe









Maps created on March 2, 2006 using the U.S. Forest Service Geocommunicator.

All tracts listed have been identified using Forest Service maps; however, the Forest Service may adjust tracts.